

BOROUGH OF EAST STROUDSBURG



COMMONWEALTH OF PENNSYLVANIA
BOROUGH OF EAST STROUDSBURG
MONROE COUNTY

ORDINANCE NO. 1414

AN ORDINANCE OF THE COUNCIL OF THE BOROUGH OF EAST STROUDSBURG, MONROE COUNTY, PENNSYLVANIA (“BOROUGH”), AMENDING CHAPTER 126 – SEWERS, OF THE CODIFIED ORDINANCES OF THE BOROUGH OF EAST STROUDSBURG. CHAPTER 126 – SEWERS SHALL BE AMENDED TO INCLUDE: LEGISLATIVE FINDINGS FOR AMENDMENTS; TO ADD A NEW SUBSECTION (14) TO CHAPTER §126-6, A. SERVICE LINES APPLYING CONSTRUCTION STANDARDS AND DETAILS CONTAINED IN APPENDIX B AND APPENDIX C; TO REMOVE THE FINAL SENTENCE OF CHAPTER §126-6, D. AND REPLACE IT WITH A SENTENCE WHICH CLARIFIES RESPONSIBILITY FOR PAYMENT OF CONSTRUCTION COSTS AND REQUIRES COMPLIANCE WITH APPENDIX B. AND C.; TO ADD AND INCORPORATE APPENDICES B, C, AND D WHICH PROVIDE CONSTRUCTION STANDARDS, MATERIALS AND DETAILS FOR ALL SEWER CONSTRUCTION, AS WELL AS PROVIDE FORMS FOR USE TO ESTABLISH SEWER SERVICE; AND TO INCLUDE PROVISIONS FOR SEVERABILITY, REPEALER, AUTHORITY, AND EFFECTIVE DATE.

WHEREAS, the Borough is a Municipal Corporation of the Commonwealth of Pennsylvania, organized and existing under the “Pennsylvania Borough Code”, as amended, 8 Pa.C.S. § 101, *et seq.*, (“Pennsylvania Borough Code”); and

WHEREAS, the East Stroudsburg Borough Council of the Borough pursuant to the Pennsylvania Borough Code, § 1202 (Specific powers), (5) make regulations for health, welfare and safety of the Borough, and § 1203 (Reserved powers), authority to make and adopt Ordinances, Bylaws, Rules, and Regulations for proper management and control of the Borough and its finances; and

WHEREAS, the Borough Council of the Borough of East Stroudsburg, Monroe County, Pennsylvania, has adopted Chapter 126 – Sewers as an ordinance to the Borough Code of East Stroudsburg; and

WHEREAS, the Borough of East Stroudsburg owns and operates the sanitary sewer system providing for collection, conveyance, and treatment of sanitary sewage and wastewater from residential, commercial, industrial, and institutional properties within the Borough Sewer Service Area; and

WHEREAS, Borough Council has conducted a public hearing on the proposed amendment on April 15th, 2025, in accordance with the Pennsylvania Municipalities Planning Code, as amended; and

WHEREAS, the Borough of East Stroudsburg has determined that it is in the best interest of the health, welfare, and safety of the Borough's citizens and customers of the Borough Sanitary Sewer System to develop, implement and enforce Sanitary Sewer Construction Standards and Details to apply to all sewer construction, extensions, connections, service lines, laterals, appurtenances, repairs and upgrades to the sanitary sewer system.

NOW, THEREFORE, BE IT ORDAINED by the Council of the Borough of East Stroudsburg, Monroe County, Pennsylvania, that the following additions and amendments to Chapter 126 – Sewers of the Code of Ordinances of the Borough of East Stroudsburg be adopted:

SECTION 1 – A new subsection (14) shall be added to Chapter § 126-6 Connection requirements and fees; penalties, A. Service Lines as follows: **(14) Chapter 126 Appendix B - Sewer Construction Standards and Appendix C - Sanitary Sewer Details shall apply to all sewer construction, extensions, connections, service lines, laterals, appurtenances, repairs, and upgrades to the Borough's sanitary sewer system.**

SECTION 2 – The final sentence of subsection Chapter § 126-6 Connection requirements and fees; penalties, D. shall be amended by removing the sentence in its entirety and replacing it with the following sentence: **“With respect to new subdivisions or land development projects within the Borough of East Stroudsburg, the total costs of all sewer mains, laterals, service lines, extensions, appurtenances, and repairs, or upgrades of existing sewer mains and appurtenances shall be borne by the owners or developers of said subdivisions and/or land development projects and said sewer improvements shall be constructed in accordance with the requirements and standards of Chapter 126 Appendix B - Sewer Construction Standards and Appendix C - Sanitary Sewer Details.”**

SECTION 3 - Chapter 126 shall be amended to include an Appendix B - Sewer Construction Standards, as follows: Appendix B - Sewer Construction Standards shall apply to all sewer construction, extensions, connections, service lines, laterals, appurtenances, repairs, and upgrades to the Borough's sanitary sewer system.

APPENDIX B

CHAPTER 126
SEWER CONSTRUCTION STANDARDS

General Construction Standards:

NOTE: Also refer to the Construction Details for additional standard requirements.

1. The East Stroudsburg Borough (Borough) shall be contacted seven (7) to ten (10) to days prior to any connection or activation or re-activation of service to the Borough's utility.
2. In addition to the state's mandatory One Call communication, the Contractor shall notify the Borough sufficiently in advance of any subsurface work within 10 feet of the Borough of East Stroudsburg's utilities.
3. The Borough has standardized some of the water system and sewer system appurtenances for the Borough's service area in order to facilitate their ability to repair and/or replace them with minimal down time.
 - a. Substitutions will be considered per the Borough Engineer's review and recommendation and The Borough's approval.
4. When a standard is noted, it refers to the most recent version.
5. All materials and workmanship related to the watermain and sewermain construction / proposed dedication shall be subject to inspection, examination, and witness of testing by the Borough of East Stroudsburg (or representative of the Borough) and the Borough of East Stroudsburg's Professional at any time.
6. The Contractor shall notify the Borough sufficiently in advance of backfilling or concealing any water or sewer facilities to permit proper inspection. If any facilities are concealed without approval or consent of the Borough, the Contractor shall uncover for inspection and recover such facilities all at the Contractor's expense, when so requested by the Borough.
7. Neither inspection, testing, approval nor acceptance of the work in whole or in part, by the Borough or its agents shall relieve the Contractor of full responsibility for materials furnished or work performed not in strict accordance with the Project's Contract Documents and Specifications.
8. During construction, the Contractor shall maintain a set of "as-built" record drawings referencing the location and elevation of all improvements related to the water and sewer facilities. At the end of the project, two (2) full sets of reproducible record drawings shall be submitted to the Borough of East Stroudsburg.
9. Conduct compaction tests at locations required by the project specifications and as directed by the ENGINEER during backfilling operations. Use testing procedure contained in ASTM D698, ASTM D2922, or ASTM D1556.
10. The degree of compaction required at each location shall be per the project plans and specifications.
11. No trench is to be left open over night and/or during times of non-activity except that secured steel plating may be used to cover where the end of the new pipe installed during the day connects to the existing pipe as allowed by East Stroudsburg Borough (and

PennDOT, if applicable). The Borough must first approve this prior to a steel plate being used. The ends and perimeter of steel plates must be secured in accordance with PaDOT requirements.

12. Where the ENGINEER or OWNER deems backfill material to be unsuitable and rejects all or part thereof due to conditions prevailing at the time of construction, remove the unsuitable material and replace with select material backfill.
13. The Contractor is responsible for meeting all separation distance requirements pertaining to the relation of water mains to sanitary sewer mains or sanitary sewer laterals, or storm sewers, as required by East Stroudsburg Borough Specifications and PADEP Standards.
14. Bedding Materials:
 - a. Pipe Bedding – AASHTO No. 8 (PennDOT 1B) Coarse Aggregate, PennDOT No. 2A Crushed Stone Table “C” aggregate conforming to Section 703.2, Publication 408 Specifications or as specified on the trench details.
 - b. Structure Bedding – AASHTO No. 57 Aggregate conforming to Section 703.2, Publication 408 Specifications.

Sanitary Sewer System Construction Standards:

1. Low pressure sewer lateral materials can be Sch 40, 80, SDR 21 PVC or HDPE pipe.
2. New sewer laterals or repairs to existing sewer laterals shall be made using Sch 40 or 80 PVC with approved fittings and adapters.
3. Sewer mains will be constructed of 8” (min) SDR 35 PVC pipe and fittings.
4. The Borough does not allow for doghouse type manholes within the it’s Sanitary Sewer System.
5. Sanitary Sewer Manholes:
 - a. Manhole Frames and Covers for Proposed Manholes: Gray Iron Castings meeting the requirements of AASHTO M 105 Class 35 B or ASTM A 48 Class 35B and PA DOT Publication 408 M, Section 605.2 (a).
 - i. Manhole frame, cover and grade adjustment rings for H-20 Loading. Include indented top design with two (2) inch high lettering “SANITARY SEWER” cast into cover.
 - ii. Standard manhole frame and cover shall be Model 1322Z frame (item 00132212) /model 1480AGS lid (item 00148122) with stainless steel pick bars as manufactured by EJ, USA Inc., include 30-inch ID by 6 1/2-inch riser with 4-5/8 inch minimum width flange, and 30-inch diameter cover with “self-sealing” lid or approved equivalent.
 - iii. Bolt-down watertight manhole frame and cover shall be Model 1322ZPT frame (item 00132214) /model 1480APT (item 00132203) lid with stainless steel pick bars as manufactured by EJ, USA Inc., include 30-inch ID by 6 1/2-inch riser with 4-5/8 inch minimum width flange, and 30-inch diameter cover with “self-sealing” lid or approved equivalent.

- b. Installation of a heat shrinkable wrap shall be used on all manhole joints, grade rings and manhole frame for corrosion protection and the prevention of water infiltration into manhole and below grade concrete structures. The structure surface shall be prepared strict accordance to manufacturer recommendations.

6. Manhole Testing:

- a. Standard Test Method for Concrete Sewer Manholes by the Negative Air Pressure (Vacuum) Test (Ref – ASTM C 1244-93).
- b. Manholes shall be tested after installation with all connections in place. This includes all drop connections shall be installed prior to testing.
- c. Manhole vacuum testing shall be performed after all manholes have been backfilled and finished to final grade.
- d. The vacuum test shall include testing of the seal between the cast iron frame and the concrete cone or grade rings. The test head shall be placed on top of the rim of the cast iron frame at the top of the manhole, in accordance with the manufacture's recommendations.
- e. A vacuum of at least ten inches of mercury (10-inches Hg) shall be drawn on the manhole.
- f. A manhole will be considered acceptable if it takes more than 60 seconds for a 48-inch, 75 seconds for a 60-inch and 90 seconds for a 72-inch diameter manhole for the vacuum to drop from 10-inch of Hg to 9-inch of Hg.
- g. If connecting to an existing Borough manhole, the manhole will be vacuum tested prior to the connection. If the manhole passes before connection, the manhole must also pass once the connection is made. In the event the manhole is not tested prior to connection, the Contractor will be responsible to ensure the manhole passes a vacuum test afterwards.

7. Sanitary Sewer Testing

- a. Clean pipelines by propelling a snug fitting rubber ball through the pipeline with water from the upstream manhole to the downstream manhole. Investigate and correct any stoppage of the cleaning ball. Collect and dispose of cleaning water and debris.
- b. Lamping
 - i. Assist the Borough Representative in the lamping operation by shining a light at one end of each pipelines section between manholes. The Borough Representative will observe the light at the other end. Pipeline that has not been installed with uniform line and grade will be rejected. Remove and re-lay rejected pipeline sections.
- c. Visual Inspection
 - i. If visual inspection, either during or after the installation of sewer mains or laterals, reveals defects, deformities, or leaks in the pipe, repairs shall be made to the satisfaction of the Engineer or Borough Inspector, prior to testing.

d. Deflection Testing of Plastic Sewer Pipe

- i. Perform vertical ring deflection testing on all portions of PVC sewer mains, in the presence of the Borough Inspector and/or Professional, after backfilling has been in place for at least 30 days but no longer than 12 months.
- ii. The maximum allowable deflection for installed plastic sewer pipe shall be limited to 5% of the original vertical internal diameter.
- iii. Perform deflection testing with a deflectometer, calibrated television, or a properly sized "Go, No-Go" mandrel. The mandrel(s) shall be constructed at the Contractor's expense and subject to the approval of the Engineer.
- iv. Pipe exceeding the allowable deflection shall be located, excavated, replaced, and retested at the sole expense of the Contractor.

8. Air Pressure Testing of Sewer Main and/or Sewer Service Lines

- a. All piping, except drainage piping, shall be thoroughly cleaned, flushed and tested prior to use.
- b. The Contractor shall furnish all equipment and labor necessary to perform the following field tests summarized below. The Engineer or Borough Inspector shall make the final determination as to whether the results are satisfactory:
- c. Sanitary Sewer Gravity Pipelines (Low Pressure Air Test)
- d. Test each newly installed section of gravity sewer line. Low pressure air test shall be in accordance with ASTM F1417 for plastic pipes. Lines shall be capped and or plugged at manholes and along laterals. It is the intention of this procedure to test all sewer laterals from the main to the limit of Contract as depicted on the service connection details.
- e. Slowly introduce air pressure to approximately 4.0 psig.
- f. If ground water is present, determine its elevation above the springline of the pipe by means of a piezometric tube. For every foot of ground water above the springline of the pipe, increase the starting air test pressure reading by 0.43 psig. Do not increase pressure above 5 psig.
- g. Allow pressure to stabilize for at least five minutes. Adjust pressure to 3.5 psig or the increased test pressure as determined above if ground water is present. Start the test.
- h. Test: Minimum holding time shall be calculated from the following equation:

$$\text{Holding Time (minutes)} = 0.00037 \times D^2 \times L/Q$$

Where D = Pipe Diameter (inches)

L = Length of Pipe Tested (feet)

Q = Allowable Air Loss (ft³/min) from table below

| Allowable Air Loss for Low Pressure Air Test | |
|--|------------------------------------|
| Nominal Pipe Size, in. | Air Loss (Q), ft ³ /min |
| 6 and 8 | 2 |

| | |
|----|-----|
| 10 | 2.5 |
| 12 | 3 |
| 15 | 4 |
| 18 | 5 |
| 21 | 5.5 |
| 24 | 6 |
| 27 | 6.5 |
| 30 | 7 |
| 33 | 7.5 |
| 36 | 8 |
| 42 | 9 |
| 48 | 10 |
| 54 | 11 |
| 60 | 12 |
| 66 | 13 |
| 72 | 14 |

Determine the test duration (Holding time) for a sewer section with a single pipe size from the table below:

| Low Pressure Air Test - Test Times (minutes) | | | |
|--|-----------------------------|--------------------------|-----------------------------|
| <u>Nominal Pipe Size</u> | <u>T (Time) Min/100 Ft.</u> | <u>Nominal Pipe Size</u> | <u>T (Time) Min/100 Ft.</u> |
| 4 | .3 | 21 | 3.0 |
| 6 | .7 | 24 | 3.6 |
| 8 | 1.2 | 27 | 4.2 |
| 10 | 1.5 | 30 | 4.8 |
| 12 | 1.8 | 33 | 5.4 |
| 15 | 2.1 | 36 | 6.0 |
| 18 | 2.4 | | |

Record the drop in pressure during the test period. If the air pressure has dropped more than 1.0 psig during the test period, the line is presumed to have failed. If the 1.0 psig air pressure drop has not occurred during the test period, the test shall be discontinued and the line will be accepted.

Note: All Gravity Sewer Service Lines/Laterals shall be required to pass a Low-Pressure Air Test or a Gravity Hydrostatic Test. The Borough Engineer shall be consulted regarding testing requirements for Low-Pressure Sewer Force mains.

SECTION 4 - Chapter 126 shall be amended to include an Appendix C - Sanitary Sewer Details, as follows: Appendix C - Sanitary Sewer Details shall apply to all sewer construction, extensions, connections, service lines, laterals, appurtenances, repairs, and upgrades to the Borough's sanitary sewer system.

APPENDIX C

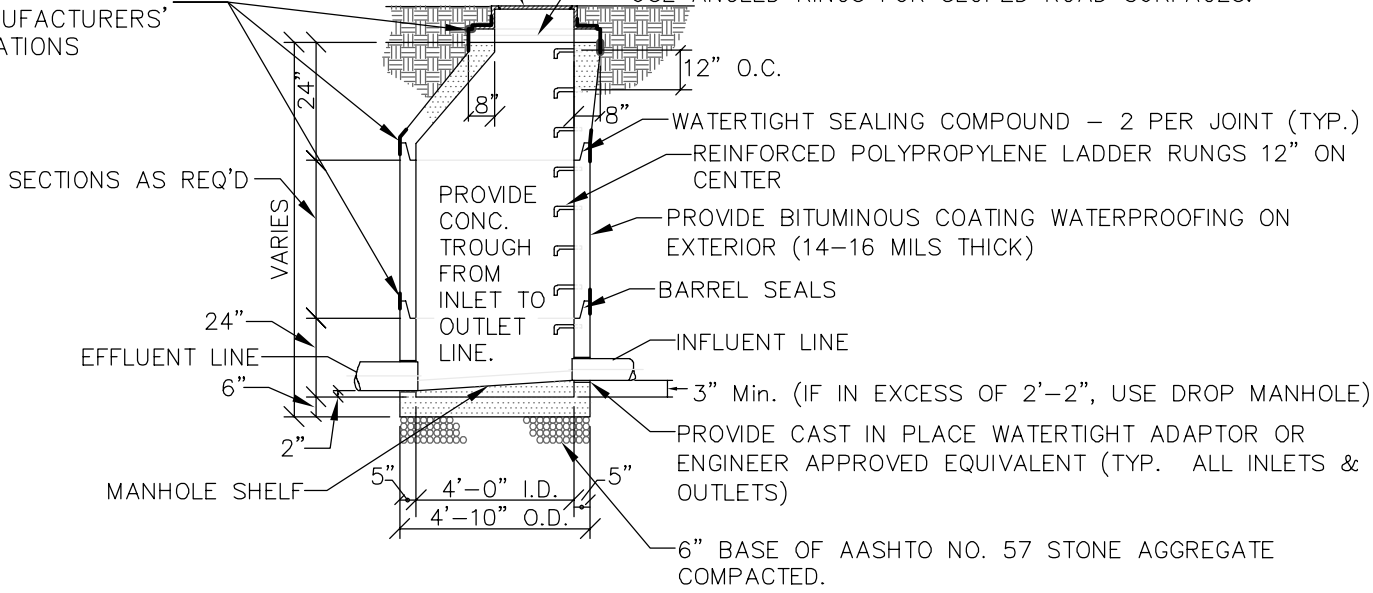
Chapter 126 **SANITARY SEWER DETAILS**

- S1** - Standard 4' DIA. Manhole
- S2** - Standard 4' DIA Drop Manhole
- S3** - Deep/Deep Drop 4' DIA Manhole
- S4** - Typical Mahole Base
- S5** - Connect Existing Pipe to New Manhole
- S6** - Manhole Frames and Covers
- S7** - Typical Sanitary Lateral
- S8** - Lateral Cleanouts
- S9** - Water and Sewer Crossing
- S10** - Concrete Encasement
- S11** - Sewer Main Trench
- S12** - Temporary Trench Restoration
- S13** - Permanent Pavement Replacement
- S14** - Low Pressure Service Connection
- S15** - Building Trap

30" DIA. CAST IRON FRAME AND COVER
(H-20 LOADING DESIGN) SELF-SEALING LID
OR ENGINEER APPROVED EQUIVALENT. SEE
MANHOLE FRAME AND LID DETAIL.

INSTALL 18" WIDE WRAPIDSEAL OR
ENGINEER APPROVED EQUIVALENT ON
ALL RISERS AND BARREL JOINTS
PER MANUFACTURERS'
SPECIFICATIONS

30" PRECAST REINFORCED CONCRETE MANHOLE GRADE
ADJUSTING RINGS TO BRING COVER TO FINISHED GRADE.
USE ANGLED RINGS FOR SLOPED ROAD SURFACES.



- NOTE:
1. STANDARD MANHOLE DEFINED AS MANHOLES WITH DEPTH LESS THAN 15 FEET, MEASURED FROM MANHOLE SHELF TO BOTTOM OF MANHOLE LID FRAME, AND INFLUENT LINE INVERT LESS THAN 2 FEET 2 INCHES ABOVE MANHOLE SHELF.
 2. ALL NEW AND/OR MODIFIED MANHOLES SHALL BE VACUUM TESTED IN THE PRESENCE OF BOROUGH PERSONNEL TO VERIFY WATER-TIGHTNESS.

ALL DOCUMENTS PREPARED BY RKR HESS, A DIVISION OF UTRS, INC. ARE INSTRUMENTS OF SERVICE WITH RESPECT TO THE PROJECT. THEY ARE NOT INTENDED OR REPRESENTED TO BE SUITABLE FOR REUSE BY OWNER OR OTHERS ON EXTENSIONS OF THE PROJECT OR ON ANY OTHER PROJECT. ANY REUSE WITHOUT WRITTEN VERIFICATION OR ADAPTATION BY RKR HESS, A DIVISION OF UTRS, INC. FOR THE SPECIFIC PURPOSE INTENDED IS STRICTLY PROHIBITED AND WILL BE AT THE OWNER'S/ USER'S SOLE RISK. RKR HESS, A DIVISION OF UTRS, INC. EXPRESSLY DISCLAIMS ALL LIABILITY FOR SUCH UNAUTHORIZED USE. OWNER/USER SHALL INDEMNIFY AND HOLD HARMLESS RKR HESS, A DIVISION OF UTRS, INC. FROM ALL CLAIMS, LOSSES, AND EXPENSES ARISING OUT OF OR RESULTING THEREFROM.

| | |
|------------------------|--------------------------|
| PROJECT MANAGER RDS | DESIGNED BY AD |
| DRAWN BY AD | CHECKED BY |
| DATE 1-28-25 | CHECKED DATE |
| SCALE NTS | PROJECT NO. 10205.577 |

S - 1 STANDARD 4' DIA. MANHOLE

CHAPTER 126 - SEWER CONSTRUCTION DETAILS

EAST STROUDSBURG BOROUGH
24 ANALOMINK ST.

EAST STROUDSBURG BOROUGH MONROE COUNTY, PA

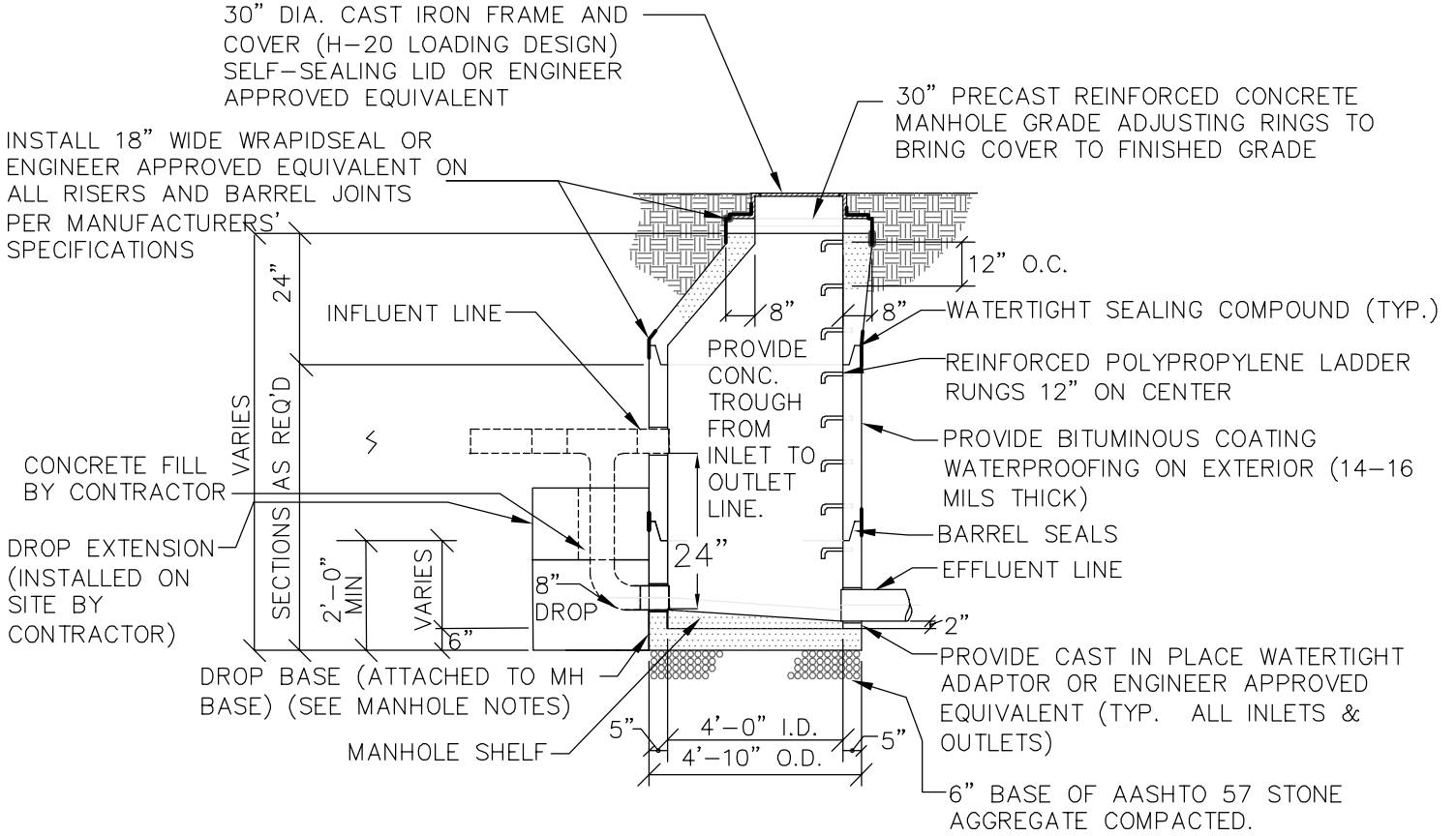
AUTHORIZED USE:

SKETCH



A DIVISION OF 

Civil Engineers • Environmental Engineers • Surveyors
112 North Courtland Street, East Stroudsburg, Pa. 18301
Telephone (570) 421-1550, Fax (570) 421-6720 © 2025
Website: www.rkrhess.com Email: info@rkrhess.com All rights reserved



NOTE:

1. STANDARD MANHOLE DEFINED AS MANHOLES WITH DEPTH LESS THAN 15 FEET, MEASURED FROM MANHOLE SHELF TO THE BOTTOM OF MANHOLE LID FRAME, AND INFLUENT LINE INVERT GREATER THAN OR EQUAL TO 2 FEET 2 INCHES ABOVE MANHOLE SHELF. PROVIDE DROP BASE AND DROP PIPING AS REQUIRED.
2. ALL NEW AND/OR MODIFIED MANHOLES SHALL BE VACUUM TESTED IN THE PRESENCE OF BOROUGH PERSONNEL TO VERIFY WATERTIGHTNESS.

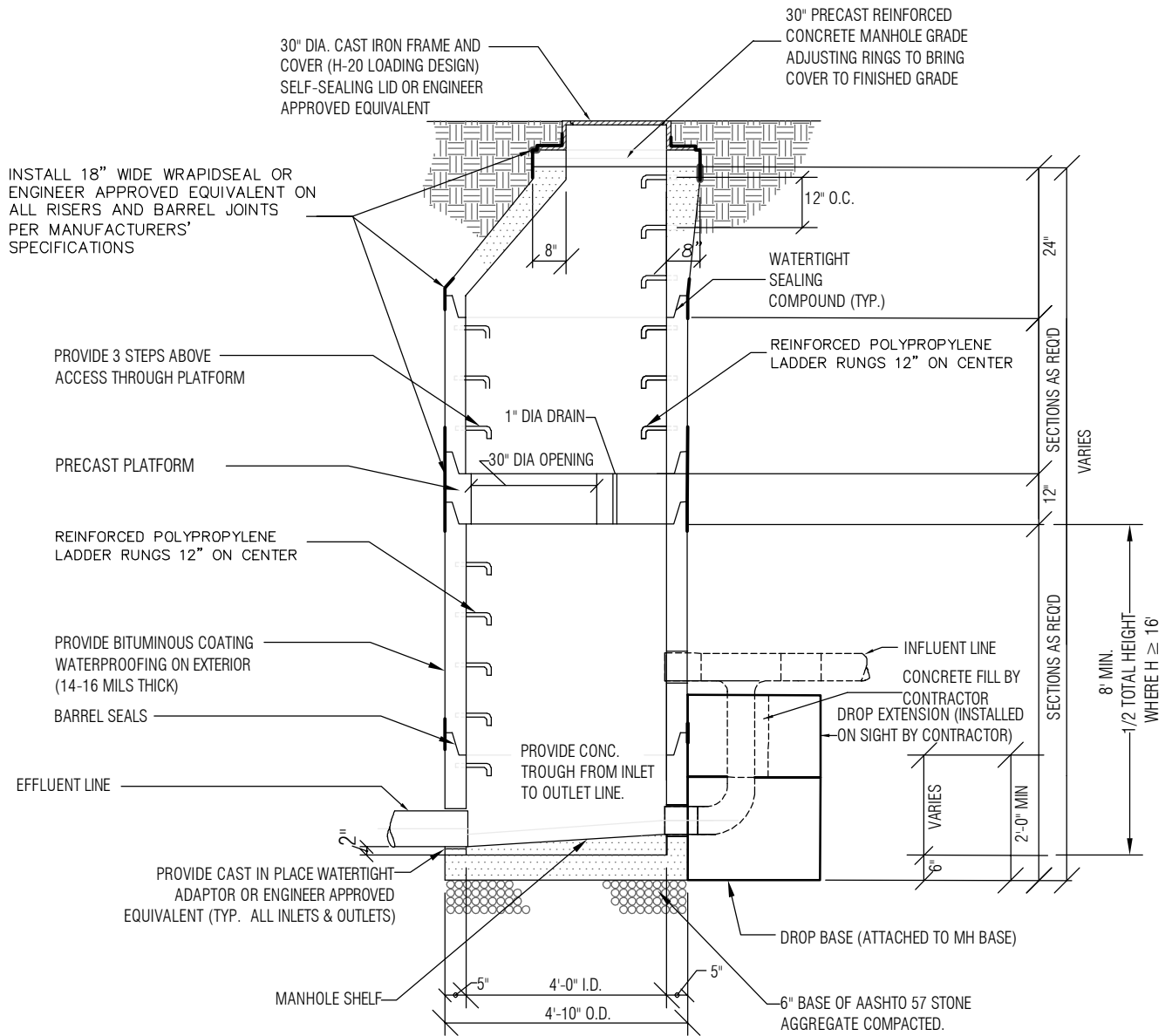
ALL DOCUMENTS PREPARED BY RKR HESS, A DIVISION OF UTRS, INC. ARE INSTRUMENTS OF SERVICE WITH RESPECT TO THE PROJECT. THEY ARE NOT INTENDED OR REPRESENTED TO BE SUITABLE FOR REUSE BY OWNER OR OTHERS ON EXTENSIONS OF THE PROJECT OR ON ANY OTHER PROJECT. ANY REUSE WITHOUT WRITTEN VERIFICATION OR ADAPTATION BY RKR HESS, A DIVISION OF UTRS, INC. FOR THE SPECIFIC PURPOSE INTENDED IS STRICTLY PROHIBITED AND WILL BE AT THE OWNER'S/ USER'S SOLE RISK. RKR HESS, A DIVISION OF UTRS, INC. EXPRESSLY DISCLAIMS ALL LIABILITY FOR SUCH UNAUTHORIZED USE. OWNER/USER SHALL INDEMNIFY AND HOLD HARMLESS RKR HESS, A DIVISION OF UTRS, INC. FROM ALL CLAIMS, LOSSES, AND EXPENSES ARISING OUT OF OR RESULTING THEREFROM.

| | |
|------------------------|--------------------------|
| PROJECT MANAGER RDS | DESIGNED BY AD |
| DRAWN BY AD | CHECKED BY |
| DATE 1-28-25 | CHECKED DATE |
| SCALE NTS | PROJECT NO. 10205.577 |

S - 2 STANDARD 4' DIA DROP MANHOLE
CHAPTER 126 - SEWER CONSTRUCTION DETAILS
 EAST STROUDSBURG BOROUGH
 24 ANALOMINK ST.
 EAST STROUDSBURG BOROUGH MONROE COUNTY, PA

AUTHORIZED USE:
SKETCH


 A DIVISION OF 
 Civil Engineers • Environmental Engineers • Surveyors
 112 North Courtland Street, East Stroudsburg, Pa. 18301
 Telephone (570) 421-1550, Fax (570) 421-6720 © 2025
 Website: www.rkrhess.com Email: info@rkrhess.com All rights reserved.



NOTE:

1. STANDARD DEEP MANHOLE DEFINED AS MANHOLES WITH DEPTH GREATER THAN OR EQUAL TO 15 FEET, MEASURED FROM MANHOLE SHELF TO THE BOTTOM OF MANHOLE LID FRAME, AND INFLUENT LINE INVERT LESS THAN TO 2 FEET 2 INCHES ABOVE MANHOLE SHELF.
2. DEEP DROP MANHOLE DEFINED AS MANHOLES WITH DEPTH GREATER THAN OR EQUAL TO 15 FEET, MEASURED FROM MANHOLE SHELF TO THE BOTTOM OF MANHOLE LID FRAME, AND INFLUENT LINE INVERT GREATER THAN OR EQUAL TO 2 FEET 2 INCHES ABOVE MANHOLE SHELF. PROVIDE DROP BASE AND DROP PIPING AS REQUIRED.
3. ALL NEW AND/OR MODIFIED MANHOLES SHALL BE VACUUM TESTED IN THE PRESENCE OF BOROUGH PERSONNEL TO VERIFY WATERTIGHTNESS.

ALL DOCUMENTS PREPARED BY RKR HESS, A DIVISION OF UTRS, INC. ARE INSTRUMENTS OF SERVICE WITH RESPECT TO THE PROJECT. THEY ARE NOT INTENDED OR REPRESENTED TO BE SUITABLE FOR REUSE BY OWNER OR OTHERS ON EXTENSIONS OF THE PROJECT OR ON ANY OTHER PROJECT. ANY REUSE WITHOUT WRITTEN VERIFICATION OR ADAPTATION BY RKR HESS, A DIVISION OF UTRS, INC. FOR THE SPECIFIC PURPOSE INTENDED IS STRICTLY PROHIBITED AND WILL BE AT THE OWNER'S/ USER'S SOLE RISK. RKR HESS, A DIVISION OF UTRS, INC. EXPRESSLY DISCLAIMS ALL LIABILITY FOR SUCH UNAUTHORIZED USE. OWNER/USER SHALL INDEMNIFY AND HOLD HARMLESS RKR HESS, A DIVISION OF UTRS, INC. FROM ALL CLAIMS, LOSSES, AND EXPENSES ARISING OUT OF OR RESULTING THEREFROM.

| | |
|------------------------|--------------------------|
| PROJECT MANAGER RDS | DESIGNED BY AD |
| DRAWN BY AD | CHECKED BY |
| DATE 1-28-25 | CHECKED DATE |
| SCALE NTS | PROJECT NO. 10205.577 |

S - 3 DEEP / DEEP DROP 4' DIA MANHOLE

CHAPTER 126 - SEWER CONSTRUCTION DETAILS

EAST STROUDSBURG BOROUGH
24 ANALOMINK ST.

EAST STROUDSBURG BOROUGH MONROE COUNTY, PA

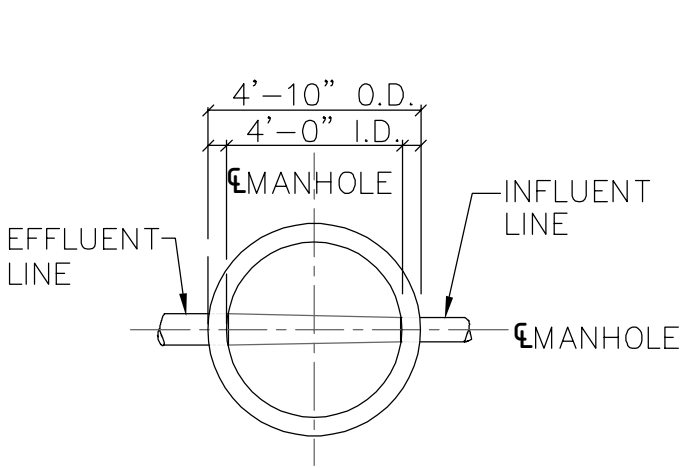
AUTHORIZED USE:

SKETCH

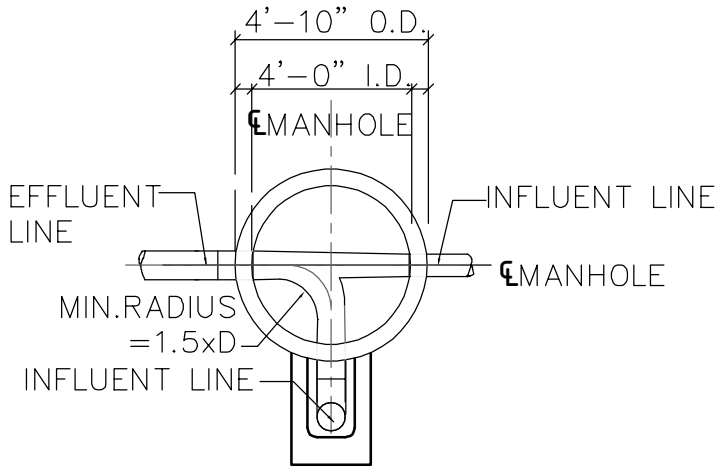
RKR HESS

A DIVISION OF

Civil Engineers • Environmental Engineers • Surveyors
112 North Courtland Street, East Stroudsburg, Pa. 18301
Telephone (570) 421-1550, Fax (570) 421-6720 © 2025
Website: www.rkrhess.com Email: info@rkrhess.com All rights reserved



TYPICAL 4' DIA. STANDARD MANHOLE
BASE SHAPED CHANNEL DETAIL





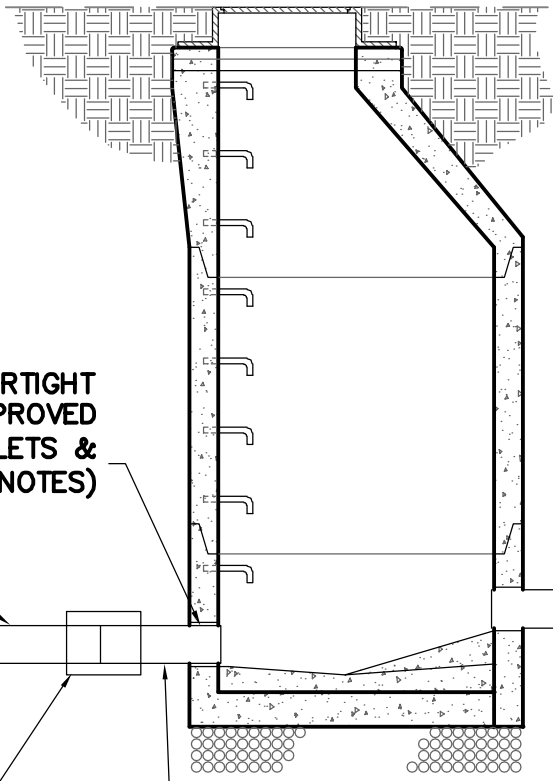
TYPICAL 4' DIA. DROP MANHOLE BASE
SHAPED CHANNEL DETAIL

NOTES:

1. MANHOLE BASE SHALL HAVE PRECAST CONCRETE CHANNEL. INVERTS SHALL BE FORMED DIRECTLY IN THE CONCRETE CHANNEL AND BE SMOOTH AND ACCURATELY SHAPED TO A SEMI-CIRCULAR BOTTOM CONFORMING TO THE INSIDE OF THE ADJACENT SEWER SECTIONS. CHANGES IN THE SIZE AND GRADE SHALL BE MADE GRADUALLY. ALL SHELF AREAS SHALL SLOPE TO THE INVERT CHANNELS AT A RATE OF ONE HALF (1/2) INCH PER FOOT.

ALL DOCUMENTS PREPARED BY RKR HESS, A DIVISION OF UTRS, INC. ARE INSTRUMENTS OF SERVICE WITH RESPECT TO THE PROJECT. THEY ARE NOT INTENDED OR REPRESENTED TO BE SUITABLE FOR REUSE BY OWNER OR OTHERS ON EXTENSIONS OF THE PROJECT OR ON ANY OTHER PROJECT. ANY REUSE WITHOUT WRITTEN VERIFICATION OR ADAPTATION BY RKR HESS, A DIVISION OF UTRS, INC. FOR THE SPECIFIC PURPOSE INTENDED IS STRICTLY PROHIBITED AND WILL BE AT THE OWNER'S/ USER'S SOLE RISK. RKR HESS, A DIVISION OF UTRS, INC. EXPRESSLY DISCLAIMS ALL LIABILITY FOR SUCH UNAUTHORIZED USE. OWNER/USER SHALL INDEMNIFY AND HOLD HARMLESS RKR HESS, A DIVISION OF UTRS, INC. FROM ALL CLAIMS, LOSSES, AND EXPENSES ARISING OUT OF OR RESULTING THEREFROM.

| | | | | |
|------------------------|--------------------------|--|-----------------|---|
| PROJECT MANAGER RDS | DESIGNED BY AD | S - 4 TYPICAL MANHOLE BASE CHAPTER 126 - SEWER CONSTRUCTION DETAILS EAST STROUDSBURG BOROUGH 24 ANALOMINK ST. EAST STROUDSBURG BOROUGH MONROE COUNTY, PA | AUTHORIZED USE: |  RKR HESS A DIVISION OF  Civil Engineers • Environmental Engineers • Surveyors 112 North Courtland Street, East Stroudsburg, Pa. 18301 Telephone (570) 421-1550, Fax (570) 421-6720 Website: www.rkrhess.com Email: info@rkrhess.com |
| DRAWN BY AD | CHECKED BY | | SKETCH | |
| DATE 1-28-25 | CHECKED DATE | | | |
| SCALE NTS | PROJECT NO. 10205.577 | | | |



PROVIDE CAST IN PLACE WATERTIGHT ADAPTOR OR ENGINEER APPROVED EQUIVALENT (TYP. ALL INLETS & OUTLETS) (SEE MANHOLE NOTES)

EXISTING PIPE SEWER MAIN

NEW PVC SEWER MAIN (4' PIPE STUB INTO MANHOLE)

MAXADAPTER SHEILED OR FERNCO HULK SEWER COUPLING TYPE PIPE COUPLING WITH CONCRETE ENCASEMENT

NOTE:

- 1.CONNECTION TO EXISTING PIPE SHOULD BE MADE WHERE EXISTING PIPE IS SOLID, UNDAMAGED AND WITHOUT CRACKS OR PIPE BELLS.
- 2.ALL NEW AND/OR MODIFIED MANHOLES SHALL BE VACUUM TESTED IN THE PRESENCE OF BOROUGH PERSONNEL TO VERIFY WATERTIGHTNESS.

ALL DOCUMENTS PREPARED BY RKR HESS, A DIVISION OF UTRS, INC. ARE INSTRUMENTS OF SERVICE WITH RESPECT TO THE PROJECT. THEY ARE NOT INTENDED OR REPRESENTED TO BE SUITABLE FOR REUSE BY OWNER OR OTHERS ON EXTENSIONS OF THE PROJECT OR ON ANY OTHER PROJECT. ANY REUSE WITHOUT WRITTEN VERIFICATION OR ADAPTATION BY RKR HESS, A DIVISION OF UTRS, INC. FOR THE SPECIFIC PURPOSE INTENDED IS STRICTLY PROHIBITED AND WILL BE AT THE OWNER'S/ USER'S SOLE RISK. RKR HESS, A DIVISION OF UTRS, INC. EXPRESSLY DISCLAIMS ALL LIABILITY FOR SUCH UNAUTHORIZED USE. OWNER/USER SHALL INDEMNIFY AND HOLD HARMLESS RKR HESS, A DIVISION OF UTRS, INC. FROM ALL CLAIMS, LOSSES, AND EXPENSES ARISING OUT OF OR RESULTING THEREFROM.

| | |
|------------------------|--------------------------|
| PROJECT MANAGER RDS | DESIGNED BY AD |
| DRAWN BY AD | CHECKED BY |
| DATE 1-28-25 | CHECKED DATE |
| SCALE NTS | PROJECT NO. 10205.577 |

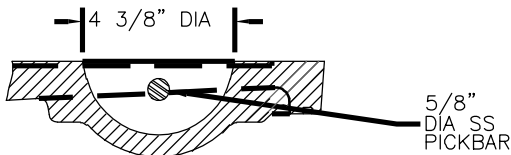
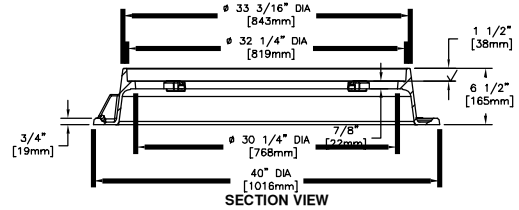
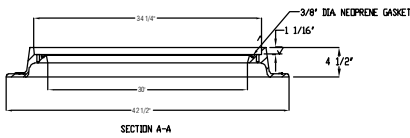
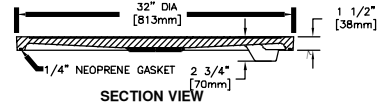
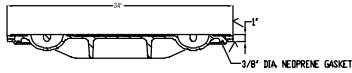
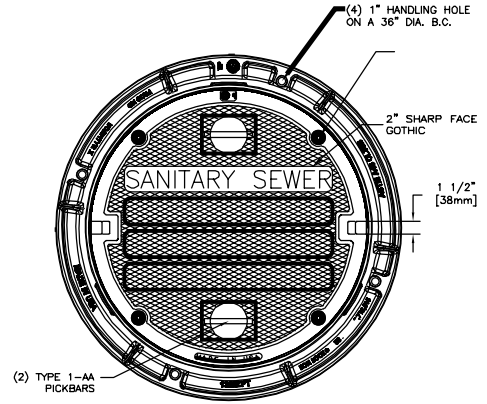
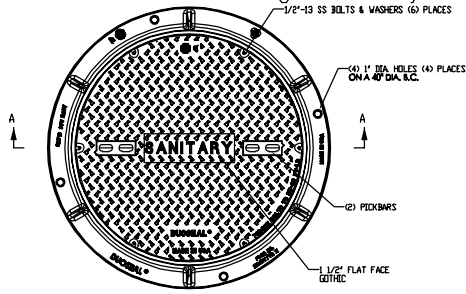
S - 5 CONNECT EXISTING PIPE TO NEW MANHOLE
 CHAPTER 126 - SEWER CONSTRUCTION DETAILS
 EAST STROUDSBURG BOROUGH
 24 ANALOMINK ST.
 EAST STROUDSBURG BOROUGH MONROE COUNTY, PA

AUTHORIZED USE:
 SKETCH

RKR HESS
 A DIVISION OF **UTRS**

Civil Engineers • Environmental Engineers • Surveyors
 112 North Courtland Street, East Stroudsburg, Pa. 18301
 Telephone (570) 421-1550, Fax (570) 421-6720 © 2025
 Website: www.rkrhess.com Email: info@rkrhess.com All rights reserved

W830ZPT DI DUDSEAL • Watertight Assembly



PICKBAR DETAIL

ALL DOCUMENTS PREPARED BY RKR HESS, A DIVISION OF UTRS, INC. ARE INSTRUMENTS OF SERVICE WITH RESPECT TO THE PROJECT. THEY ARE NOT INTENDED OR REPRESENTED TO BE SUITABLE FOR REUSE BY OWNER OR OTHERS ON EXTENSIONS OF THE PROJECT OR ON ANY OTHER PROJECT. ANY REUSE WITHOUT WRITTEN VERIFICATION OR ADAPTATION BY RKR HESS, A DIVISION OF UTRS, INC. FOR THE SPECIFIC PURPOSE INTENDED IS STRICTLY PROHIBITED AND WILL BE AT THE OWNER'S/ USER'S SOLE RISK. RKR HESS, A DIVISION OF UTRS, INC. EXPRESSLY DISCLAIMS ALL LIABILITY FOR SUCH UNAUTHORIZED USE. OWNER/USER SHALL INDEMNIFY AND HOLD HARMLESS RKR HESS, A DIVISION OF UTRS, INC. FROM ALL CLAIMS, LOSSES, AND EXPENSES ARISING OUT OF OR RESULTING THEREFROM.

| | |
|------------------------|--------------------------|
| PROJECT MANAGER RDS | DESIGNED BY AD |
| DRAWN BY AD | CHECKED BY |
| DATE 1-28-25 | CHECKED DATE |
| SCALE NTS | PROJECT NO. 10205.577 |

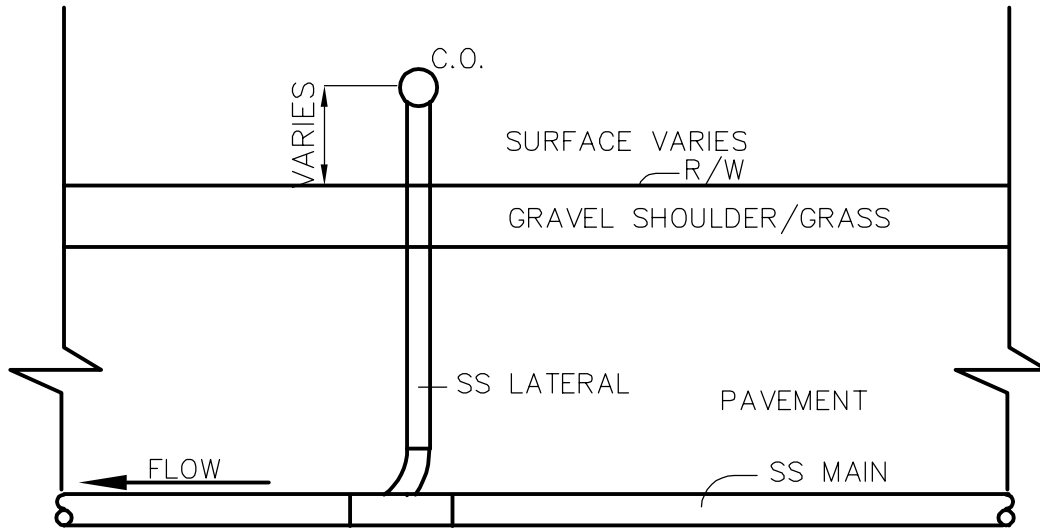
S - 6 MANHOLE FRAMES AND COVERS
CHAPTER 126 - SEWER CONSTRUCTION DETAILS
 EAST STROUDSBURG BOROUGH
 24 ANALOMINK ST.
 EAST STROUDSBURG BOROUGH MONROE COUNTY, PA

AUTHORIZED USE:
 SKETCH

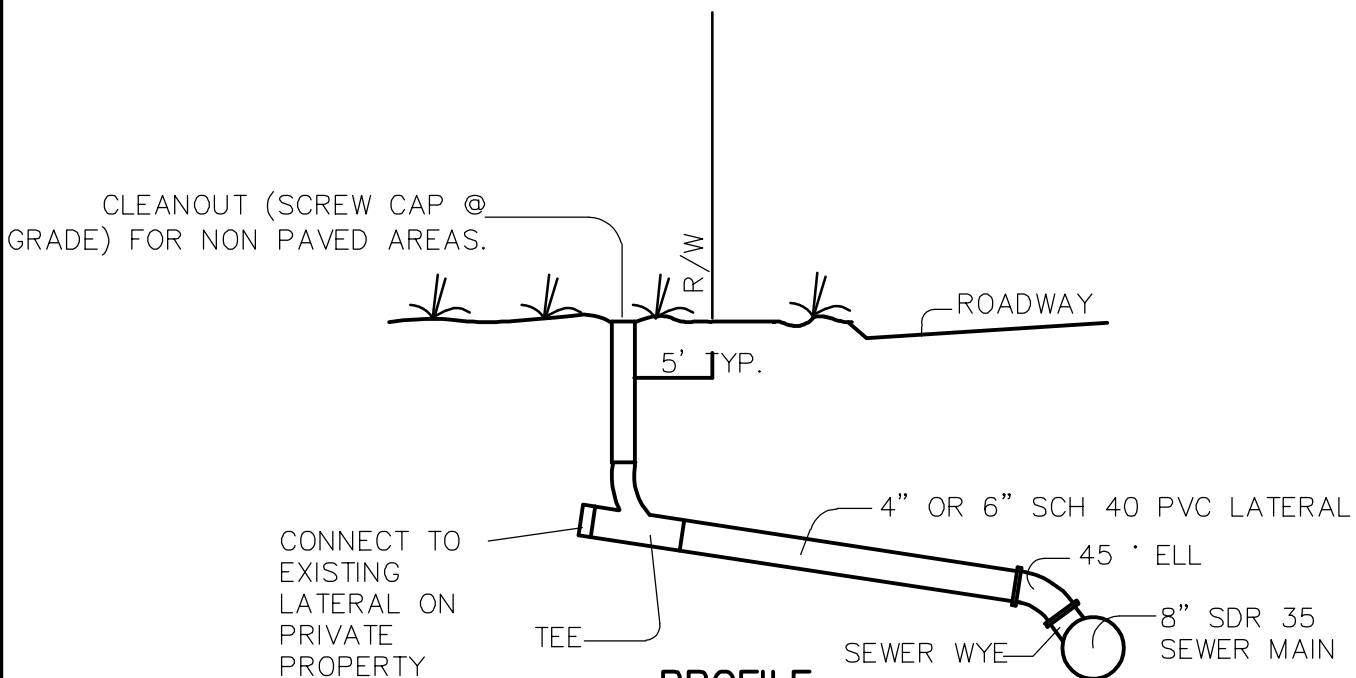
RKR HESS

A DIVISION OF **UTRS**

Civil Engineers • Environmental Engineers • Surveyors
 112 North Courtland Street, East Stroudsburg, Pa. 18301
 Telephone (570) 421-1550, Fax (570) 421-6720 © 2025
 Website: www.rkrhess.com Email: info@rkrhess.com All rights reserved



PLAN



PROFILE

NOTE: ALL NEW SEWER LATERALS OR REPAIRS TO EXISTING LATERALS SHALL BE MADE WITH SCH 40 OR SCH 80 PVC WITH APPROVED FITTINGS AND ADAPTORS, SHALL BE INSPECTED BY BOROUGH PERSONNEL, AND SHALL PASS A HYDROSTATIC OR LOW- PRESSURE AIR TEST AS WITNESSED BY BOROUGH PERSONNEL.

ALL DOCUMENTS PREPARED BY RKR HESS, A DIVISION OF UTRS, INC. ARE INSTRUMENTS OF SERVICE WITH RESPECT TO THE PROJECT. THEY ARE NOT INTENDED OR REPRESENTED TO BE SUITABLE FOR REUSE BY OWNER OR OTHERS ON EXTENSIONS OF THE PROJECT OR ON ANY OTHER PROJECT. ANY REUSE WITHOUT WRITTEN VERIFICATION OR ADAPTATION BY RKR HESS, A DIVISION OF UTRS, INC. FOR THE SPECIFIC PURPOSE INTENDED IS STRICTLY PROHIBITED AND WILL BE AT THE OWNER'S/ USER'S SOLE RISK. RKR HESS, A DIVISION OF UTRS, INC. EXPRESSLY DISCLAIMS ALL LIABILITY FOR SUCH UNAUTHORIZED USE. OWNER/USER SHALL INDEMNIFY AND HOLD HARMLESS RKR HESS, A DIVISION OF UTRS, INC. FROM ALL CLAIMS, LOSSES, AND EXPENSES ARISING OUT OF OR RESULTING THEREFROM.

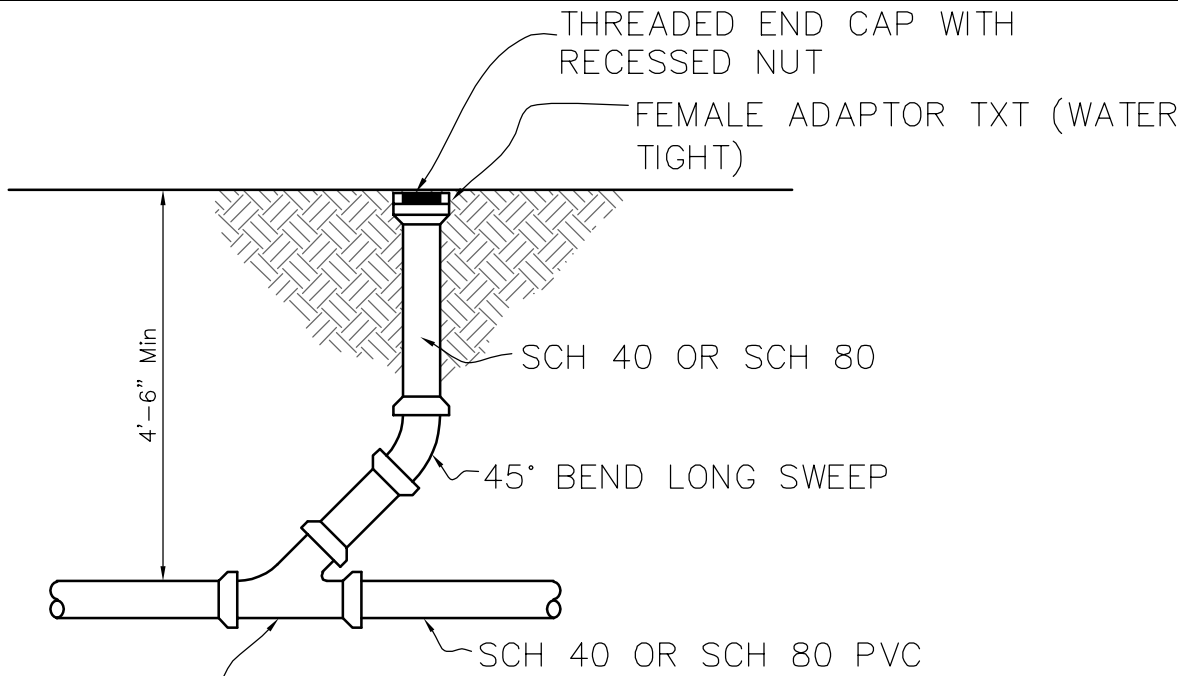
| | |
|------------------------|--------------------------|
| PROJECT MANAGER RDS | DESIGNED BY AD |
| DRAWN BY AD | CHECKED BY |
| DATE 1-28-25 | CHECKED DATE |
| SCALE NTS | PROJECT NO. 10205.577 |

S - 7 TYPICAL SANITARY LATERAL
CHAPTER 126 - SEWER CONSTRUCTION DETAILS
EAST STROUDSBURG BOROUGH
24 ANALOMINK ST.
EAST STROUDSBURG BOROUGH MONROE COUNTY, PA

| |
|-----------------|
| AUTHORIZED USE: |
| SKETCH |

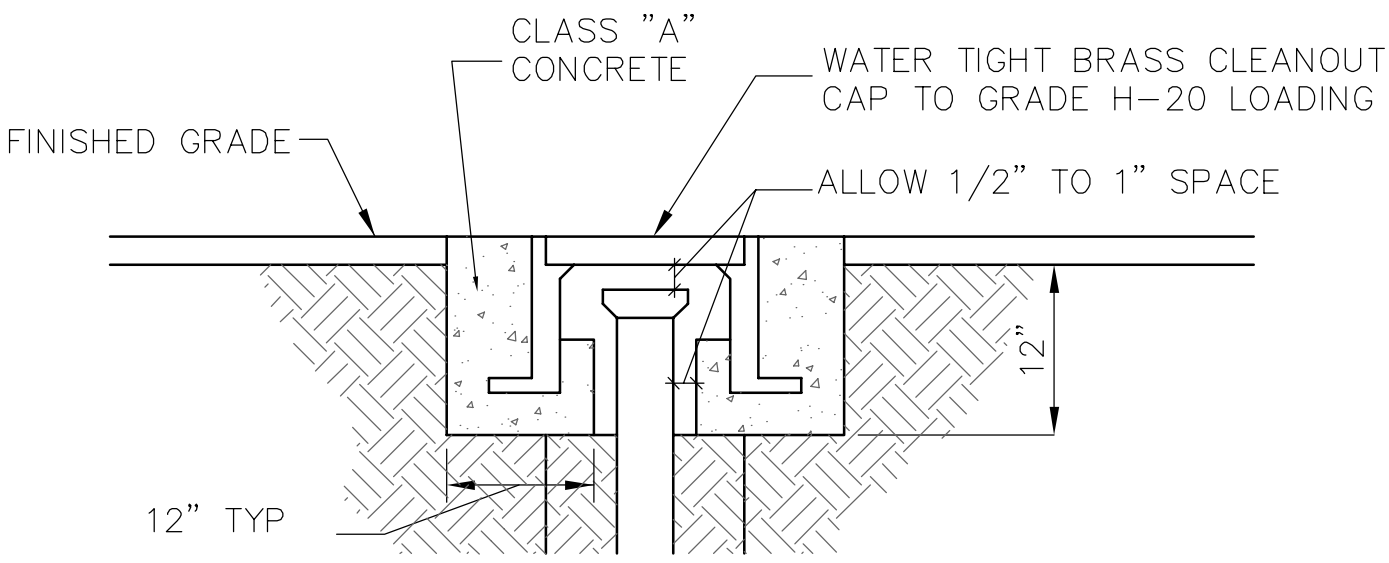
RKR HESS
 A DIVISION OF **UTRS**

Civil Engineers • Environmental Engineers • Surveyors
 112 North Courtland Street, East Stroudsburg, Pa. 18301
 Telephone (570) 421-1550, Fax (570) 421-6720 © 2025
 Website: www.rkrhess.com Email: info@rkrhess.com All rights reserved



45° WYE WITH 45° ELL OR 90° TEE/WYE

NON PAVED AREAS



PAVED AREAS

ALL DOCUMENTS PREPARED BY RKR HESS, A DIVISION OF UTRS, INC. ARE INSTRUMENTS OF SERVICE WITH RESPECT TO THE PROJECT. THEY ARE NOT INTENDED OR REPRESENTED TO BE SUITABLE FOR REUSE BY OWNER OR OTHERS ON EXTENSIONS OF THE PROJECT OR ON ANY OTHER PROJECT. ANY REUSE WITHOUT WRITTEN VERIFICATION OR ADAPTATION BY RKR HESS, A DIVISION OF UTRS, INC. FOR THE SPECIFIC PURPOSE INTENDED IS STRICTLY PROHIBITED AND WILL BE AT THE OWNER'S/ USER'S SOLE RISK. RKR HESS, A DIVISION OF UTRS, INC. EXPRESSLY DISCLAIMS ALL LIABILITY FOR SUCH UNAUTHORIZED USE. OWNER/USER SHALL INDEMNIFY AND HOLD HARMLESS RKR HESS, A DIVISION OF UTRS, INC. FROM ALL CLAIMS, LOSSES, AND EXPENSES ARISING OUT OF OR RESULTING THEREFROM.

| | |
|------------------------|--------------------------|
| PROJECT MANAGER RDS | DESIGNED BY AD |
| DRAWN BY AD | CHECKED BY |
| DATE 1-28-25 | CHECKED DATE |
| SCALE NTS | PROJECT NO. 10205.577 |

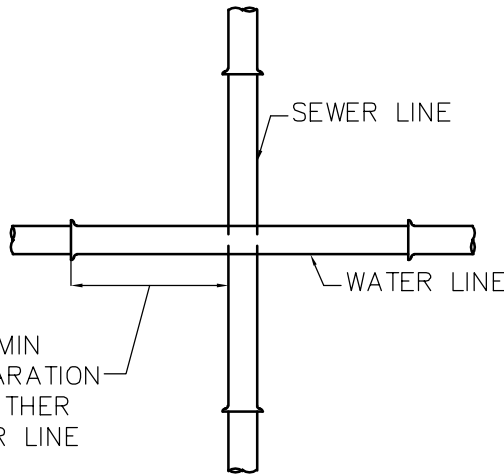
S - 8 LATERAL CLEANOUTS
CHAPTER 126 - SEWER CONSTRUCTION DETAILS
 EAST STROUDSBURG BOROUGH
 24 ANALOMINK ST.
 EAST STROUDSBURG BOROUGH MONROE COUNTY, PA

AUTHORIZED USE:
 SKETCH

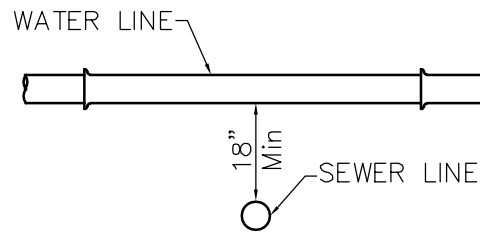
RKR HESS
 A DIVISION OF **UTRS**

Civil Engineers • Environmental Engineers • Surveyors
 112 North Courtland Street, East Stroudsburg, Pa. 18301
 Telephone (570) 421-1550, Fax (570) 421-6720 © 2025
 Website: www.rkrhess.com Email: info@rkrhess.com All rights reserved

MAINTAIN 18" MIN VERTICAL SEPARATION FOR 10' MIN EITHER SIDE OF SEWER LINE



PLAN



SECTION

NOTE: SEE PA DEP WATER AND SEWER REGULATIONS AND STANDARDS

1. IN GENERAL, SANITARY SEWERS (MAINS AND LATERALS) SHALL MAINTAIN A MINIMUM OF 10 FT. HORIZONTAL SEPARATION DISTANCE FROM EXISTING WATER MAINS. WHENEVER THIS HORIZONTAL SEPARATION CANNOT BE MAINTAINED, SANITARY SEWERS SHALL BE LAID AT SUCH AN ELEVATION THAT THE BOTTOM OF THE WATER MAIN IS 18 INCHES ABOVE THE TOP OF THE SEWER. THIS VERTICAL SEPARATION SHALL BE MAINTAINED FOR THE PORTION OF THE SEWER LOCATED WITHIN 10 FEET HORIZONTALLY OF ANY WATER MAIN IT CROSSES. THE 10 FEET IS TO BE MEASURED AS A PERPENDICULAR DISTANCE FROM THE SEWER LINE TO THE WATER MAIN.

2. FOR CROSSING OVER STORM SEWERS:

WHEN IT IS IMPOSSIBLE TO OBTAIN THE PROPER HORIZONTAL AND/OR VERTICAL SEPARATION, AND THE WATER MAIN MUST CROSS OVER THE STORM SEWER:

- A. ADEQUATE STRUCTURAL SUPPORT SHALL BE PROVIDED FOR THE WATER MAIN TO PREVENT DAMAGE TO STORM SEWER.
- B. A FULL LENGTH OF WATER MAIN SHALL BE CENTERED AT THE POINT OF CROSSING SO THAT THE JOINTS SHALL BE EQUIDISTANT.
- C. CONCRETE ENCASEMENT OF THE WATER MAIN SHALL BE PROVIDED AS INDICATED FOR 10' ON EACH SIDE OF THE WATER MAIN/STORM SEWER CROSSING, UNLESS OTHERWISE PERMITTED BY THE OWNER AND ENGINEER.

ALL DOCUMENTS PREPARED BY RKR HESS, A DIVISION OF UTRS, INC. ARE INSTRUMENTS OF SERVICE WITH RESPECT TO THE PROJECT. THEY ARE NOT INTENDED OR REPRESENTED TO BE SUITABLE FOR REUSE BY OWNER OR OTHERS ON EXTENSIONS OF THE PROJECT OR ON ANY OTHER PROJECT. ANY REUSE WITHOUT WRITTEN VERIFICATION OR ADAPTATION BY RKR HESS, A DIVISION OF UTRS, INC. FOR THE SPECIFIC PURPOSE INTENDED IS STRICTLY PROHIBITED AND WILL BE AT THE OWNER'S/ USER'S SOLE RISK. RKR HESS, A DIVISION OF UTRS, INC. EXPRESSLY DISCLAIMS ALL LIABILITY FOR SUCH UNAUTHORIZED USE. OWNER/USER SHALL INDEMNIFY AND HOLD HARMLESS RKR HESS, A DIVISION OF UTRS, INC. FROM ALL CLAIMS, LOSSES, AND EXPENSES ARISING OUT OF OR RESULTING THEREFROM.

| | |
|------------------------|--------------------------|
| PROJECT MANAGER RDS | DESIGNED BY AD |
| DRAWN BY AD | CHECKED BY |
| DATE 1-28-25 | CHECKED DATE |
| SCALE NTS | PROJECT NO. 10205.577 |

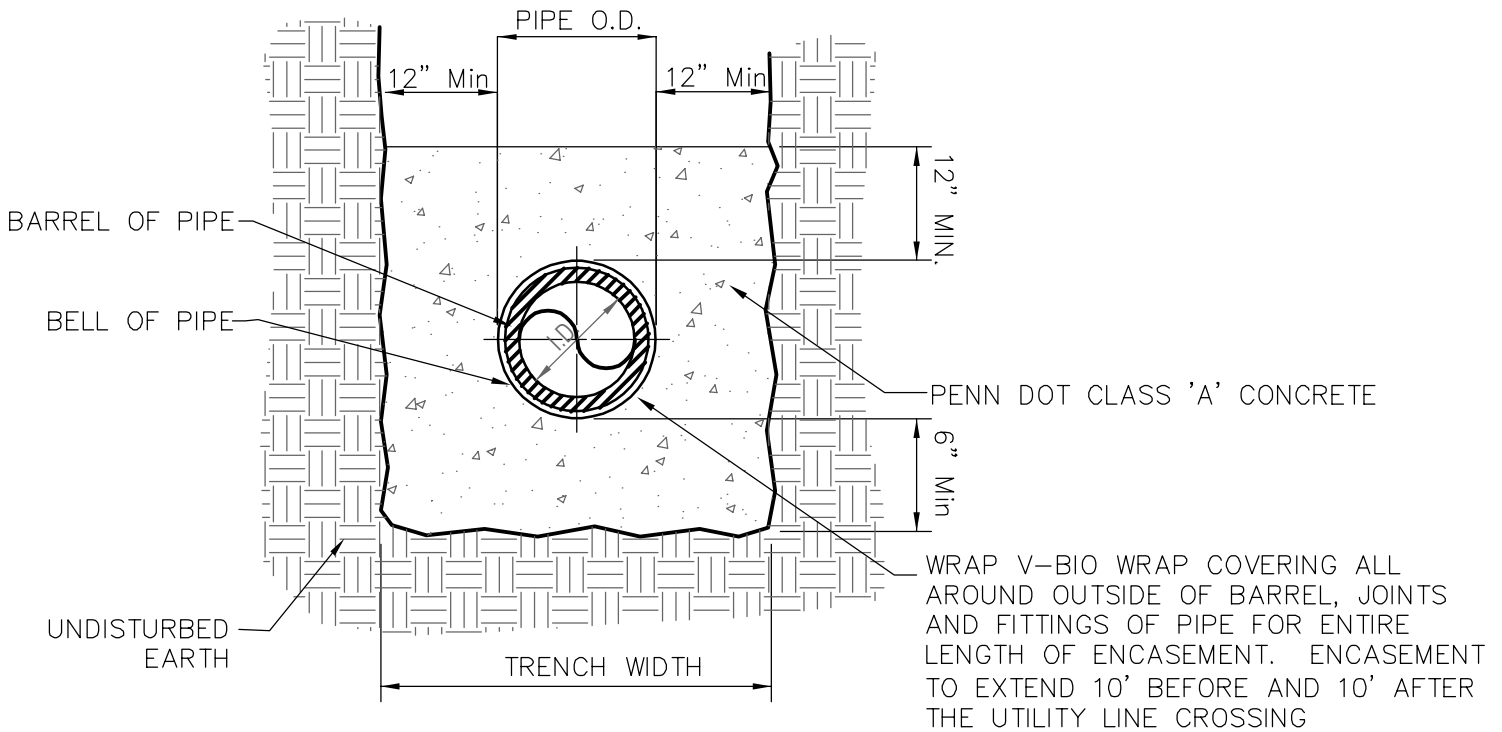
| | |
|--|-------------------|
| S - 9 WATER AND SEWER CROSSING | |
| CHAPTER 126 - SEWER CONSTRUCTION DETAILS | |
| EAST STROUDSBURG BOROUGH | |
| 24 ANALOMINK ST. | |
| EAST STROUDSBURG BOROUGH | MONROE COUNTY, PA |

| |
|-----------------|
| AUTHORIZED USE: |
| PERMITS |



A DIVISION OF 

Civil Engineers • Environmental Engineers • Surveyors
 112 North Courtland Street, East Stroudsburg, Pa. 18301
 Telephone (570) 421-1550, Fax (570) 421-6720
 Website: www.rkrhess.com Email: info@rkrhess.com



ALL DOCUMENTS PREPARED BY RKR HESS, A DIVISION OF UTRS, INC. ARE INSTRUMENTS OF SERVICE WITH RESPECT TO THE PROJECT. THEY ARE NOT INTENDED OR REPRESENTED TO BE SUITABLE FOR REUSE BY OWNER OR OTHERS ON EXTENSIONS OF THE PROJECT OR ON ANY OTHER PROJECT. ANY REUSE WITHOUT WRITTEN VERIFICATION OR ADAPTATION BY RKR HESS, A DIVISION OF UTRS, INC. FOR THE SPECIFIC PURPOSE INTENDED IS STRICTLY PROHIBITED AND WILL BE AT THE OWNER'S/ USER'S SOLE RISK. RKR HESS, A DIVISION OF UTRS, INC. EXPRESSLY DISCLAIMS ALL LIABILITY FOR SUCH UNAUTHORIZED USE. OWNER/USER SHALL INDEMNIFY AND HOLD HARMLESS RKR HESS, A DIVISION OF UTRS, INC. FROM ALL CLAIMS, LOSSES, AND EXPENSES ARISING OUT OF OR RESULTING THEREFROM.

| | |
|------------------------|--------------------------|
| PROJECT MANAGER RDS | DESIGNED BY AD |
| DRAWN BY AD | CHECKED BY |
| DATE 1-28-25 | CHECKED DATE |
| SCALE NTS | PROJECT NO. 10205.577 |

S - 10 CONCRETE ENCASEMENT

CHAPTER 126 - SEWER CONSTRUCTION DETAILS
EAST STROUDSBURG BOROUGH
24 ANALOMINK ST.
EAST STROUDSBURG BOROUGH MONROE COUNTY, PA

AUTHORIZED USE:

PERMITS



A DIVISION OF 

Civil Engineers • Environmental Engineers • Surveyors
112 North Courtland Street, East Stroudsburg, Pa. 18301
Telephone (570) 421-1550, Fax (570) 421-6720
Website: www.rkrhess.com Email: info@rkrhess.com

© 2025
1/20/25

EXISTING AND PROPOSED PAVEMENT AND TRAFFIC AREAS

NON PAVED AREAS MORE THAN 3' FROM EXISTING OR PROPOSED EDGE OF PAVED SHOULDER OR MORE THAN 7' FROM EDGE OF EXISTING OR PROPOSED PAVEMENT IN UNIMPROVED SHOULDER AREAS.

MATCH ROAD RESTORATION SPECIFICATIONS

4" TOPSOIL, SEED & MULCH OR PROVIDE STABILIZED GRAVEL SURFACE AS PER SPECIFICATIONS

BACK FILL WITH 8" OF NATIVE MATERIAL FREE OF STONES 6"φ OR LARGER AND FREE OF WET, FROZEN, OR ORGANIC MATERIALS PLACED AND COMPACTED TO 95% UNIT DRY WEIGHT DENSITY.

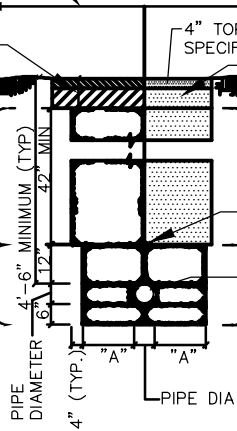
BACK FILL WITH PENN DOT NO.2A CRUSHED STONE TABLE "C" SECTION 703.2, PUB. 408 SPECIFICATIONS PLACED IN 6"-8" LIFTS AND COMPACTED TO 100% DRY WEIGHT DENSITY IN PAVED AREAS.

BACK FILL WITH NATIVE MATERIAL FREE OF STONES 6"φ OR LARGER AND FREE OF WET, FROZEN, OR ORGANIC MATERIALS PLACED AND COMPACTED TO 95% UNIT DRY WEIGHT DENSITY IN 6" LIFTS (OR PENNDOT 2A FOR POOR SOILS).

DETECTABLE WARNING TAPE: POLYETHYLENE FILM WARNING TAPE ENCASING A METALLIC CORE, 6" WIDE AND 4 MILS THICK MINIMUM, CONTINUOUSLY INSCRIBED WITH A DESCRIPTION OF THE UTILITY.

BACK FILL WITH PENN DOT NO.1B STONE TABLE "C" SECTION 703.2, PUB. 408 SPECIFICATIONS PLACED IN 6"-8" LIFTS AND COMPACTED TO 95% DRY WEIGHT DENSITY IN PAVED AREAS.

PENN DOT NO. 1B STONE TABLE "C" SECTION 703.2, PUB. 408 SPECIFICATIONS. PLACED IN 6"-8" LIFTS AND COMPACTED TO 95% DRY WEIGHT DENSITY.



| | |
|-----------|----------|
| PIPE SIZE | "A" |
| 8"-12" | 12" |
| >12" | PIPE DIA |

NOTE:

- 2A AGGREGATE BACKFILL IS REQUIRED WHEREVER THE UTILITY IS WITHIN 3 FEET OF THE SHOULDER OR WITHIN 7 FEET OF EDGE OF PAVEMENT IN UNIMPROVED SHOULDER AREAS.
- POOR NATIVE SOIL INCLUDES BUT NOT LIMITED TO: PEAT, MUCK OR HIGHLY EXPANSIVE SOILS.
- DISTURBED AREAS MUST RECEIVE TEMPORARY RESTORATION AT THE END OF EACH DAY.

ALL DOCUMENTS PREPARED BY RKR HESS, A DIVISION OF UTRS, INC. ARE INSTRUMENTS OF SERVICE WITH RESPECT TO THE PROJECT. THEY ARE NOT INTENDED OR REPRESENTED TO BE SUITABLE FOR REUSE BY OWNER OR OTHERS ON EXTENSIONS OF THE PROJECT OR ON ANY OTHER PROJECT. ANY REUSE WITHOUT WRITTEN VERIFICATION OR ADAPTATION BY RKR HESS, A DIVISION OF UTRS, INC. FOR THE SPECIFIC PURPOSE INTENDED IS STRICTLY PROHIBITED AND WILL BE AT THE OWNER'S/ USER'S SOLE RISK. RKR HESS, A DIVISION OF UTRS, INC. EXPRESSLY DISCLAIMS ALL LIABILITY FOR SUCH UNAUTHORIZED USE. OWNER/USER SHALL INDEMNIFY AND HOLD HARMLESS RKR HESS, A DIVISION OF UTRS, INC. FROM ALL CLAIMS, LOSSES, AND EXPENSES ARISING OUT OF OR RESULTING THEREFROM.

| | |
|-----------------|--------------|
| PROJECT MANAGER | DESIGNED BY |
| RDS | AD |
| DRAWN BY | CHECKED BY |
| AD | |
| DATE | CHECKED DATE |
| 1-28-25 | |
| SCALE | PROJECT NO. |
| NTS | 10205.577 |

S - 11 SEWER MAIN TRENCH
CHAPTER 126 - SEWER CONSTRUCTION DETAILS
EAST STROUDSBURG BOROUGH
24 ANALOMINK ST.
EAST STROUDSBURG BOROUGH MONROE COUNTY, PA

AUTHORIZED USE:
 PERMITS



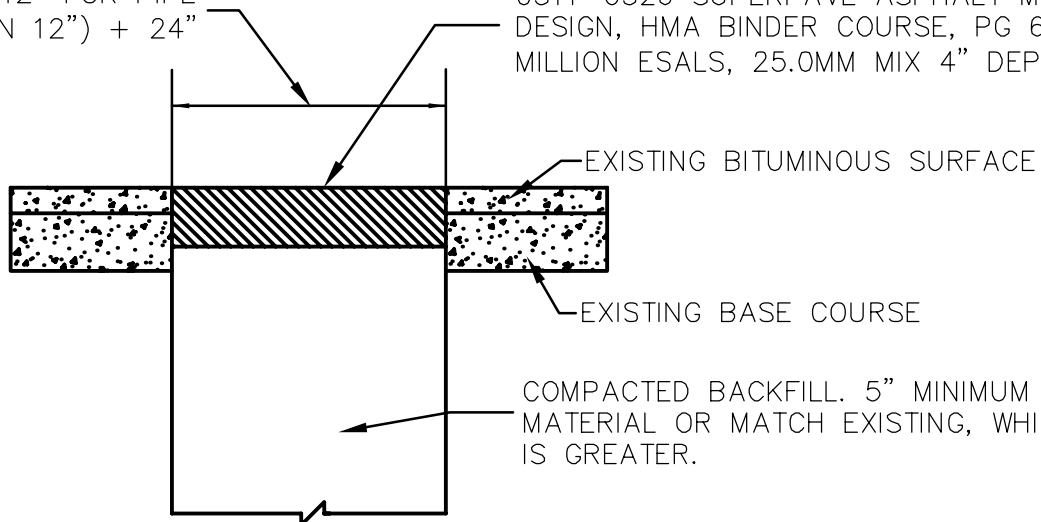
A DIVISION OF **UTRS**

Civil Engineers • Environmental Engineers • Surveyors
 112 North Courtland Street, East Stroudsburg, Pa. 18301
 Telephone (570) 421-1550, Fax (570) 421-6720
 Website: www.rkrhess.com Email: info@rkrhess.com

2025
 2025-02-28

W = PIPE DIA (OR 12" FOR PIPE WITH DIA LESS THAN 12") + 24"

0311-0326 SUPERPAVE ASPHALT MIXTURE DESIGN, HMA BINDER COURSE, PG 64-22, <0.3 MILLION ESALS, 25.0MM MIX 4" DEPTH



COMPACTED BACKFILL. 5" MINIMUM SUBBASE MATERIAL OR MATCH EXISTING, WHICHEVER IS GREATER.

NOTE:

1. DISTURBED AREAS MUST RECEIVE TEMPORARY RESTORATION AT THE END OF EACH DAY.

ALL DOCUMENTS PREPARED BY RKR HESS, A DIVISION OF UTRS, INC. ARE INSTRUMENTS OF SERVICE WITH RESPECT TO THE PROJECT. THEY ARE NOT INTENDED OR REPRESENTED TO BE SUITABLE FOR REUSE BY OWNER OR OTHERS ON EXTENSIONS OF THE PROJECT OR ON ANY OTHER PROJECT. ANY REUSE WITHOUT WRITTEN VERIFICATION OR ADAPTATION BY RKR HESS, A DIVISION OF UTRS, INC. FOR THE SPECIFIC PURPOSE INTENDED IS STRICTLY PROHIBITED AND WILL BE AT THE OWNER'S/ USER'S SOLE RISK. RKR HESS, A DIVISION OF UTRS, INC. EXPRESSLY DISCLAIMS ALL LIABILITY FOR SUCH UNAUTHORIZED USE. OWNER/USER SHALL INDEMNIFY AND HOLD HARMLESS RKR HESS, A DIVISION OF UTRS, INC. FROM ALL CLAIMS, LOSSES, AND EXPENSES ARISING OUT OF OR RESULTING THEREFROM.

| | |
|------------------------|--------------------------|
| PROJECT MANAGER RDS | DESIGNED BY AD |
| DRAWN BY AD | CHECKED BY |
| DATE 1-28-25 | CHECKED DATE |
| SCALE NTS | PROJECT NO. 10205.577 |

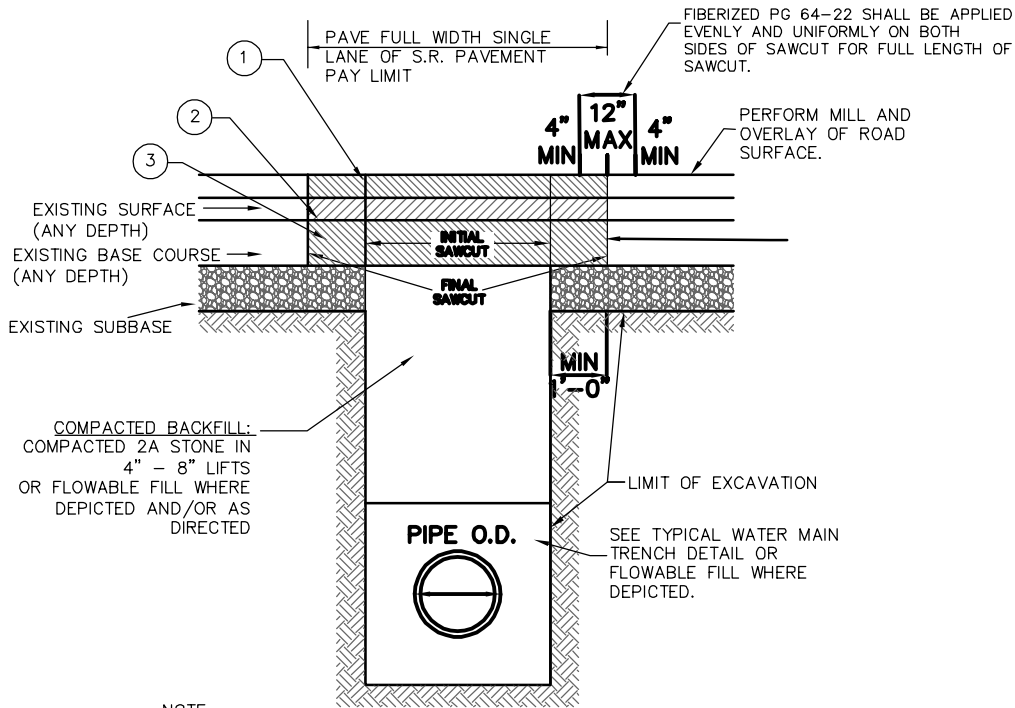
S - 12 TEMPORARY TRENCH RESTORATION
CHAPTER 126 - SEWER CONSTRUCTION DETAILS
 EAST STROUDSBURG BOROUGH
 24 ANALOMINK ST.
 EAST STROUDSBURG BOROUGH MONROE COUNTY, PA

AUTHORIZED USE:
 SKETCH

RKR HESS

A DIVISION OF **UTRS**

Civil Engineers • Environmental Engineers • Surveyors
 112 North Courtland Street, East Stroudsburg, Pa. 18301
 Telephone (570) 421-1550, Fax (570) 421-6720 © 2025
 Website: www.rkrhess.com Email: info@rkrhess.com All rights reserved



NOTE:

1. ALL MATERIAL THICKNESSES SHOWN FOR STATE HIGHWAY RESTORATION DETAILS ARE MINIMUMS. EXISTING DEPTHS GREATER THAN INDICATED MINIMUM VALUES MAY NEED TO BE RESTORED IF DIRECTED BY PENNDOT AND PROFESSIONAL.
2. FULL DEPTH SAWCUTS SHALL BE PERFORMED FOR ALL OPENINGS MADE WITHIN THE PAVEMENT. THE CONTRACTOR SHALL BE FULLY AWARE THAT ALL AREAS OF UNDERLYING CONCRETE PAVEMENT SHALL BE SAWCUT TO FULL DEPTH, UNLESS OTHERWISE PERMITTED BY PENNDOT.
3. THE RESTORATION DEPICTED REPRESENTS PERMANENT PAVEMENT FOR DISTURBED PENNDOT RIGHT OF WAY.
4. DISTURBED AREAS MUST RECEIVE TEMPORARY PAVEMENT RESTORATION AT THE END OF EACH DAY.

- ① SUPERPAVE ASPHALT MIXTURE DESIGN, WEARING COURSE, PG 64E-22, 0.3 TO < 3 MILLION ESALS, 9.5 MM MIX, 1 1/2" DEPTH, SRL-H
- ② SUPERPAVE ASPHALT MIXTURE DESIGN, BINDER COURSE, PG 64S-22, 0.3 TO < 3 MILLION ESALS, 19.0 MM MIX, 2 1/2" DEPTH
- ③ SUPERPAVE ASPHALT MIXTURE DESIGN, BASE COURSE, PG 64S-22, 0.3 TO < 3 MILLION ESALS, 25.0 MM MIX, 4" DEPTH

TRENCH BACKFILL NOTES:

1. PENNDOT NO. 2A CRUSHED STONE BACKFILL SHALL BE UTILIZED FOR ALL TRENCH BACKFILL OF PENNDOT CARTWAY, AS DEPICTED IN THE DETAIL.
2. FOR WORK IN PENNDOT RIGHT-OF-WAYS, THE TRENCH BACKFILL SHALL BE PERFORMED IN THE PRESENCE OF A PENNDOT AUTHORIZED INSPECTOR PER THE REQUIREMENTS OF PUBLICATION 408, SECTION 601.3q. THE INSPECTOR WILL COMPLETE FORM CS-6 FOR EACH RUN OF THE INSTALLED PIPE.
3. THE CONTRACTOR SHALL BE FULLY RESPONSIBLE FOR TRAFFIC CONTROL IN ACCORDANCE WITH PENNDOT STANDARDS

ALL DOCUMENTS PREPARED BY RKR HESS, A DIVISION OF UTRS, INC. ARE INSTRUMENTS OF SERVICE WITH RESPECT TO THE PROJECT. THEY ARE NOT INTENDED OR REPRESENTED TO BE SUITABLE FOR REUSE BY OWNER OR OTHERS ON EXTENSIONS OF THE PROJECT OR ON ANY OTHER PROJECT. ANY REUSE WITHOUT WRITTEN VERIFICATION OR ADAPTATION BY RKR HESS, A DIVISION OF UTRS, INC. FOR THE SPECIFIC PURPOSE INTENDED IS STRICTLY PROHIBITED AND WILL BE AT THE OWNER'S/ USER'S SOLE RISK. RKR HESS, A DIVISION OF UTRS, INC. EXPRESSLY DISCLAIMS ALL LIABILITY FOR SUCH UNAUTHORIZED USE. OWNER/USER SHALL INDEMNIFY AND HOLD HARMLESS RKR HESS, A DIVISION OF UTRS, INC. FROM ALL CLAIMS, LOSSES, AND EXPENSES ARISING OUT OF OR RESULTING THEREFROM.

| | | |
|------------------------|--------------------------|---|
| PROJECT MANAGER RDS | DESIGNED BY AD | S - 13 PERMANENT PAVEMENT REPLACEMENT CHAPTER 126 - SEWER CONSTRUCTION DETAILS EAST STROUDSBURG BOROUGH 24 ANALOMINK ST. EAST STROUDSBURG BOROUGH MONROE COUNTY, PA |
| DRAWN BY AD | CHECKED BY | |
| DATE 1-28-25 | CHECKED DATE | |
| SCALE NTS | PROJECT NO. 10205.577 | |

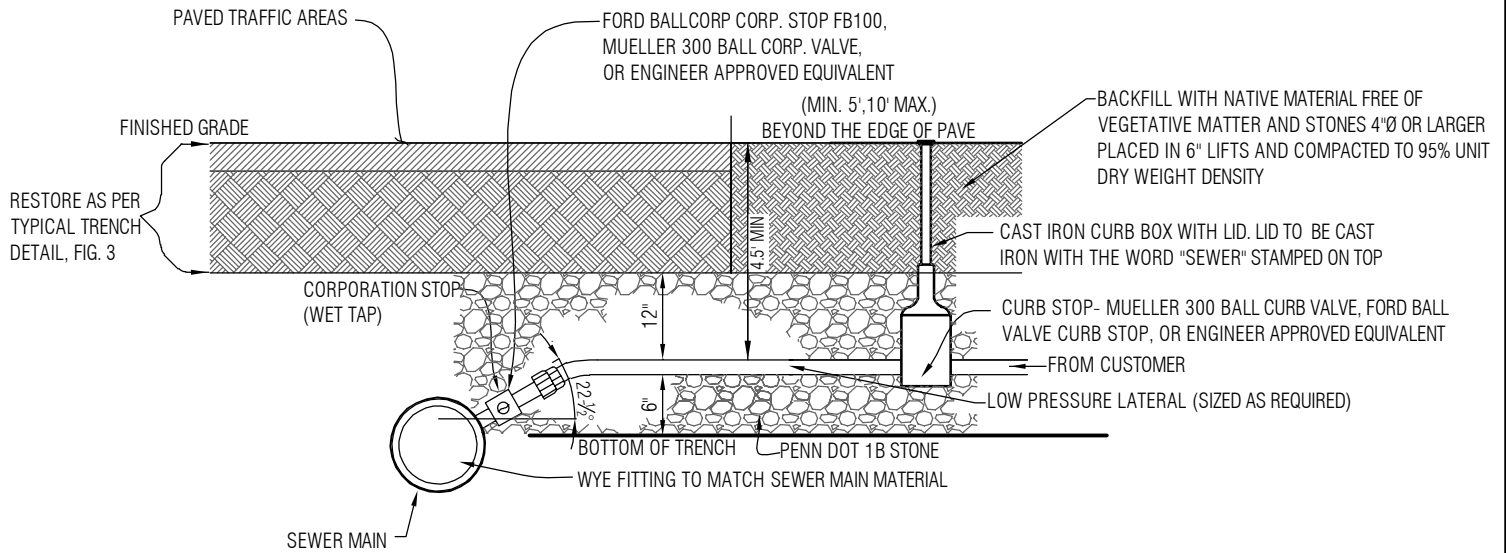
AUTHORIZED USE:
PERMITS

RKR HESS

A DIVISION OF **UTRS**

Civil Engineers • Environmental Engineers • Surveyors
112 North Courtland Street, East Stroudsburg, Pa. 18301
Telephone (570) 421-1550, Fax (570) 421-6720

Website: www.rkrhess.com Email: info@rkrhess.com © 2025



NOTE:

1. ALL CONNECTIONS MADE TO A LOW PRESSURE MAIN REQUIRE THE USE OF GRINDER PUMPS.
2. CONNECTION TO ANY SEWER MAIN WILL REQUIRE A ROADWAY ENCROACHMENT PERMIT. IT IS THE APPLICANT'S RESPONSIBILITY TO SECURE SUCH PERMIT FROM THE BOROUGH (OR PENNDOT, IF REQUIRED)
3. GRINDER PUMP DETAILS, SPECIFICATIONS AND HYDRAULIC CALCULATIONS ARE TO BE SUBMITTED BY THE APPLICANT FOR REVIEW BY THE BOROUGH.
4. LOW PRESSURE SEWER LATERAL MATERIALS CAN BE SCH 40, 80, SDR 21 PVC OR HDPE PIPE.
5. FORD MODEL F303 SERVICE SADDLE, OR APPROVED EQUIVALENT, CAN BE UTILIZED WHEN CONNECTING TO EXISTING SEWER MAINS ONLY. A WYE FITTING SHALL BE PROVIDED ON NEW SEWER MAINS.

ALL DOCUMENTS PREPARED BY RKR HESS, A DIVISION OF UTRS, INC. ARE INSTRUMENTS OF SERVICE WITH RESPECT TO THE PROJECT. THEY ARE NOT INTENDED OR REPRESENTED TO BE SUITABLE FOR REUSE BY OWNER OR OTHERS ON EXTENSIONS OF THE PROJECT OR ON ANY OTHER PROJECT. ANY REUSE WITHOUT WRITTEN VERIFICATION OR ADAPTATION BY RKR HESS, A DIVISION OF UTRS, INC. FOR THE SPECIFIC PURPOSE INTENDED IS STRICTLY PROHIBITED AND WILL BE AT THE OWNER'S/ USER'S SOLE RISK. RKR HESS, A DIVISION OF UTRS, INC. EXPRESSLY DISCLAIMS ALL LIABILITY FOR SUCH UNAUTHORIZED USE. OWNER/USER SHALL INDEMNIFY AND HOLD HARMLESS RKR HESS, A DIVISION OF UTRS, INC. FROM ALL CLAIMS, LOSSES, AND EXPENSES ARISING OUT OF OR RESULTING THEREFROM.

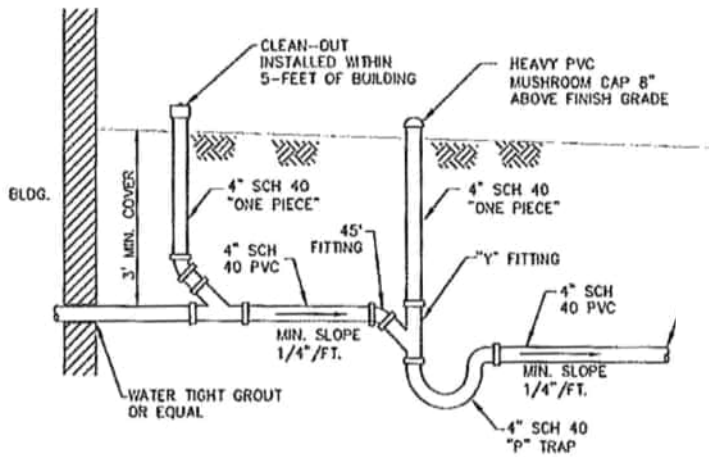
| | |
|------------------------|--------------------------|
| PROJECT MANAGER RDS | DESIGNED BY AD |
| DRAWN BY AD | CHECKED BY |
| DATE 1-28-25 | CHECKED DATE |
| SCALE NTS | PROJECT NO. 10205.577 |

S - 14 LOW PRESSURE SERVICE LATERAL CONNECTION
CHAPTER 126- SEWER CONSTRUCTION DETAILS
EAST STROUDSBURG BOROUGH
24 ANALOMINK ST.
EAST STROUDSBURG BOROUGH MONROE COUNTY, PA

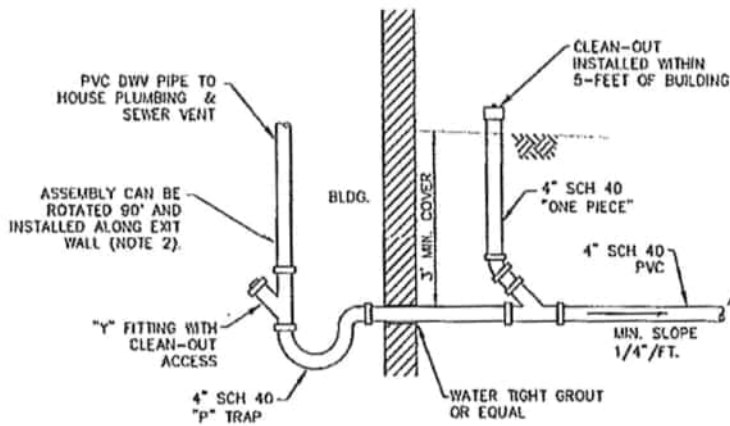
AUTHORIZED USE:
PERMITS

RKR HESS
 A DIVISION OF **UTRS**

Civil Engineers • Environmental Engineers • Surveyors
 112 North Courtland Street, East Stroudsburg, Pa. 18301
 Telephone (570) 421-1550, Fax (570) 421-6720 © 2025
 Website: www.rkrhess.com Email: info@rkrhess.com All rights reserved



**INSTALLATION OUTSIDE OF BUILDING
ELEVATION**



**INSTALLATION INSIDE OF BUILDING
ELEVATION**

NOTE:

1. TRAPS SHALL BE INSTALLED IN A CONDITIONED CRAWL SPACE OR BASEMENT WHERE POSSIBLE.
2. WHEN INSTALLED IN BASEMENTS TRAPS SHALL BE INSTALLED ALONG THE EXIT WALL OR AS CLOSE TO THE EXIT WALL AS POSSIBLE.
3. ALL INSIDE INSTALLATIONS SHALL INCLUDE A "Y" CLEAN-OUT AS SHOWN.
4. OUTSIDE INSTALLATIONS SHALL HAVE A MINIMUM COVER OF 42- INCHES MEASURED FROM THE TOP OF THE TRAP TO FINISHED GRADE. SITE CONDITIONS MAY REQUIRE A DEEPER INSTALLATION OR OTHER MEASURES NECESSARY TO PREVENT FREEZING.
5. INSTALLATION MUST COMPLY WITH ALL APPLICABLE BUILDING CODES.

ALL DOCUMENTS PREPARED BY RKR HESS, A DIVISION OF UTRS, INC. ARE INSTRUMENTS OF SERVICE WITH RESPECT TO THE PROJECT. THEY ARE NOT INTENDED OR REPRESENTED TO BE SUITABLE FOR REUSE BY OWNER OR OTHERS ON EXTENSIONS OF THE PROJECT OR ON ANY OTHER PROJECT. ANY REUSE WITHOUT WRITTEN VERIFICATION OR ADAPTATION BY RKR HESS, A DIVISION OF UTRS, INC. FOR THE SPECIFIC PURPOSE INTENDED IS STRICTLY PROHIBITED AND WILL BE AT THE OWNER'S/ USER'S SOLE RISK. RKR HESS, A DIVISION OF UTRS, INC. EXPRESSLY DISCLAIMS ALL LIABILITY FOR SUCH UNAUTHORIZED USE. OWNER/USER SHALL INDEMNIFY AND HOLD HARMLESS RKR HESS, A DIVISION OF UTRS, INC. FROM ALL CLAIMS, LOSSES, AND EXPENSES ARISING OUT OF OR RESULTING THEREFROM.

| | |
|------------------------|--------------------------|
| PROJECT MANAGER RDS | DESIGNED BY AD |
| DRAWN BY AD | CHECKED BY |
| DATE 1-28-25 | CHECKED DATE |
| SCALE NTS | PROJECT NO. 10205.577 |

S - 15 BUILDING TRAP INSTALLATION
CHAPTER 126- SEWER CONSTRUCTION DETAILS
EAST STROUDSBURG BOROUGH
24 ANALOMINK ST.
EAST STROUDSBURG BOROUGH MONROE COUNTY, PA

AUTHORIZED USE:
PERMITS

RKR HESS

A DIVISION OF **UTRS**

Civil Engineers • Environmental Engineers • Surveyors
112 North Courtland Street, East Stroudsburg, Pa. 18301
Telephone (570) 421-1550, Fax (570) 421-6720 © 2025
Website: www.rkrhess.com Email: info@rkrhess.com All rights reserved

SECTION 5 - Chapter 126 shall be amended to include an Appendix D - Chapter 126 Sewer Forms, as follows: Appendix D - Chapter 126 Sewer Forms shall apply to all sewer construction, extensions, connections, service lines, laterals, appurtenances, repairs, and upgrades to the Borough's sanitary sewer system.

**APPLICATION FOR SEWER SERVICE
BOROUGH OF EAST STROUDSBURG
24 ANALOMINK STREET
EAST STROUDSBURG, PA 18301**

PHONE: 570-421-8300

Fax: 570-421-5575

www.eaststroudsburgboro.org

DATE _____

APPLICATION # _____

OWNER NAME

| |
|--|
| |
|--|

PROJECT/BUSINESS NAME

| |
|--|
| |
|--|

SERVICE ADDRESS

| | |
|--------|---------------------|
| Street | Unit or Apartment # |
| City | |

MAILING ADDRESS (If different from Service Address)

| | | |
|--------|-------|----------|
| Street | | |
| City | State | Zip Code |

Please check box if contact information is the same as listed above.

If contact information is different please complete below.

Contact Name _____

Contact Telephone Number _____

Contact E-mail _____

Property Type

Domestic Residential _____ Single Family _____ Duplex _____
Apartment Complex _____ Condominium _____
Commercial _____ **Mixed Use** _____ **Fire** _____
Industrial _____ **Number of Units** _____ **Irrigation** _____

Usage

For any type of property use other than single family residential, anticipated daily usage is required.

Gallons Per Day (GPD) _____ EDUs* _____ Meter Size _____

3/27/2025

1

* A Sewer Equivalent Dwelling Unit (EDU) for Non-Residential Customers is equal to 217.8 gallons per day (GPD) of average water usage, as measured by the service water meter. EDUs are rounded to the nearest tenth.

Tapping Fees \$ _____
Connection Fees \$ _____
Late Fees \$ _____

Total Cost \$ _____
Deposit \$ _____
Balance Owed \$ _____

If extra work is required to initiate service not covered by the Application for Service Fee, it will be the owner's responsibility. In those cases the owner agrees to pay the Borough of East Stroudsburg for the extra services or if necessary hire a private plumber to make necessary changes.

**SEWER SERVICE WILL NOT BE ACTIVATED BY TURNING ON WATER TO THE PREMISES
UNTIL ALL FEES ARE PAID IN FULL**

Property Owner _____ Date _____
Or Authorized Representative Signature

In signing this application for service, the Property Owner agrees to abide by all Rules and Regulations of Chapter 126 – Sewer of the Borough Code in effect at the time the application is made, and by other such Rules and Regulations as may be promulgated from time to time by the Borough.

RETURN the signed form to Lee.Philips@EastStroudsburgboro.org,
Layla.rau@eaststroudsburgboro.org, and admin@pa-codes.com.

For Office Use

Service Start Date _____ Account Number _____
Meter Size _____ Meter Manufacturer _____
Meter # _____ ERT # _____
Starting Reading Date _____ Reading Check Date _____
Reading _____ Reading _____
Meter Location _____ ERT Location _____
Account to be sequenced next to this property address _____
EDUs Established _____ Initial EBUs Established _____
Reviewed By _____

SECTION 6 - SEVERABILITY. It is hereby declared to be the legislative intent that if a court of competent jurisdiction declares any provision of this Ordinance to be invalid or ineffective in whole or in part, the effect of such decision shall be limited to those provisions which are expressly stated in the decision to be invalid or ineffective, and all other provisions of this Ordinance shall continue to be separately and fully effective. The Borough Council hereby declares that it would have passed this Ordinance and each section or part thereof, other than any part declared invalid or ineffective, if it had advance knowledge that any part would be declared invalid or ineffective.

SECTION 7 - REPEALER. Any specific provisions of Chapter 126 – Sewers of the Borough Code the Borough of East Stroudsburg that are in direct conflict within this Ordinance are hereby repealed.

SECTION 8 – AUTHORITY. This Ordinance is enacted under the authority conferred by the Pennsylvania Borough Code, as amended.

SECTION 9 - EFFECTIVE DATE. This Ordinance shall be effective upon its approval as provided by law.

ORDAINED AND ENACTED into an ORDINANCE on this _____ day of _____, 2025.

BOROUGH OF EAST STROUDSBURG

BY: _____

Borough Council (Vice) President

ATTEST:

Borough (Assistant) Secretary

APPROVED BY:

Mayor Victor Brozusky

(SEAL)

DATE: _____

SECRETARY'S CERTIFICATE

I hereby certify that the foregoing is a true and correct copy of Ordinance No. 1414 adopted by a majority vote of the Borough Council of the Borough of East Stroudsburg at a meeting of the Borough of East Stroudsburg duly held on May 6, 2025. Present at the meeting were and a record of their vote was as follows:

| | Present | Aye | Nay |
|------------------|----------------|------------|------------|
| Sonia Wolbert | _____ | _____ | _____ |
| Erika Huber | _____ | _____ | _____ |
| Edmund Freeborn | _____ | _____ | _____ |
| Carrie Panepinto | _____ | _____ | _____ |
| Jane Gagliardo | _____ | _____ | _____ |
| Paul Shemansky | _____ | _____ | _____ |

Further be it certified that public notice of said meeting was given in the manner provided by law; that said Ordinance shall be duly recorded upon the Minutes of the Council and in the book of ordinances in accordance with law and further that Council has not amended or rescinded the Ordinance, and same is in full force and effect this 6th day of May, 2025.

(Assistant) Secretary

(SEAL)